

DEPARTMENT OF THE ARMY TECHNICAL MANUAL

TECHNICAL MANUAL
ORGANIZATIONAL, DIRECT SUPPORT AND
GENERAL SUPPORT MAINTENANCE
REPAIR PARTS AND
SPECIAL TOOLS LIST
(INCLUDING DEPOT MAINTENANCE
REPAIR PARTS AND
SPECIAL TOOLS)

COMPRESSOR, AIR,
RECIPROCATING, ELECTRIC MOTOR
DRIVEN, RECEIVER
MOUNTED, 2 HP, 5 CFM, 175 PSI
(INGERSOLL-RAND) MODEL CM234F2
(NSN 4310-00-604-4368)

THIS PUBLICATION IS A COURTESY QUICK COPY FROM THE UNITED STATES ARMY PUBLICATIONS DISTRIBUTION CENTER, ST. LOUIS, MISSOURI, TO MEET YOUR NEEDS WHILE WE REPLENISH OUR REGULAR STOCK.

**ORGANIZATIONAL, DIRECT SUPPORT AND
GENERAL SUPPORT MAINTENANCE
REPAIR PARTS AND SPECIAL TOOLS LIST
(INCLUDING DEPOT MAINTENANCE REPAIR PARTS AND SPECIAL TOOLS)
COMPRESSOR, AIR, RECIPROCATING, ELECTRIC MOTOR DRIVEN,
RECEIVER MOUNTED, 2 HP, 5 CFM, 175 PSI (INGERSOLL-RAND)
MODEL CM234F2
(NSN 4310-00-604-4368)
Current as of 14 May 1976**

REPORTING OF ERRORS

You can help to improve this manual by calling attention to errors and by recommending improvements. Your letter, DA Form 2028 (Recommended Changes to Publications) and Blank Forms), and/or DA Form 2028-2 (Recommended Changes to Equipment Technical Manuals), may be used. Copies of DA Form 2028-2 are attached in the back of the Manual for your use. Please mail your recommended changes directly to Commander, U.S. Army Troop Support Command, ATTN: DRSTS-MPP, 4300 Goodfellow Boulevard, St. Louis, Missouri 63120. A reply will be furnished directly to you.

		Page	Illus Figure
SECTION I.	INTRODUCTION	1	
Group II.	REPAIR PARTS LIST		
01	Guard		
	Belt Guard Assembly	5	1
02	Dehydrator		
	Dehydrator Assembly.....	6	2
	Air Filter Assembly with Heater	7	3
03	Electric Motor and Related Parts		
	Compressor Motor	8	4
	Starter and Selector Switch Assembly	10	5
	Pressure Switch	11	6
04	Air Compressor Assembly		
	V-Belts, Aftercooler and Intercooler	12	7
	Air Compressor.....	13	8
	Pilot Valve, Centrifugal Unloader and Frame End Covers	14	9
	Inlet Filter Assembly	16	10
	L.P. Piston, Cylinder and Rod Assembly	17	11
	H.P. Piston, Cylinder and Rod Assembly	19	12
	Frame, Crankshaft and Oil Seal	21	13
05	Air Receiver		
	Receiver, Check Valve	23	14
	Receiver Pipes and Fittings	25	15
	Inflation Device and Hose.....	27	16

SECTION	III.	SPECIAL TOOLS LIST (NOT APPLICABLE)	
	IV.	NATIONAL STOCK NUMBER AND REFERENCE	
		NUMBER INDEX	28

Section I. INTRODUCTION

1. Scope.

This manual lists repair parts, special tools, test, measurement, and diagnostic equipment (TMDE), and other support equipment required for operation and performance of organizational, direct support, and general support maintenance of the Compressor.

2. General.

a. *Section II - Repair Parts List.* A list of repair parts authorized for use in the performance of maintenance. The list also includes parts which must be removed for replacement of the authorized parts. Parts lists are composed of functional groups in ascending numerical sequence, with the parts in each group listed in figure and item number sequence.

b. *Section III - Special Tools List.* Not Applicable.

c. *Section IV - National Stock Number and Part Number Index.* A list, in ascending numerical sequence, of all National stock numbers appearing in the listings, followed by a list, in alphanumeric sequence, of all part numbers appearing in the listings. National stock number and part numbers are cross-referenced to each illustration figure and item number appearance.

3. Explanation of Columns.

The following provides an explanation of columns found in the tabular listings:

a. *Illustration.* This column is divided as follows:

(1) *Figure number.* Indicates the figure number of the illustration in which the item is shown.

(2) *Item number.* The number used to identify each item called out in the illustration.

b. *Source, Maintenance, and Recoverability Codes (SMR).*

(1) *Source code.* Source codes are assigned to support items to indicate the manner of acquiring support items for maintenance, repair, or overhaul of end items. Source codes are entered in the first and second positions of the Uniform SMR Code format as follows:

Code	Definition
PA	Item procured and stocked for anticipated or known usage.
PB	Item procured and stocked for insurance purpose because essentially dictates that a minimum quantity be available in the supply systems.
PC	Item procured and stocked and which otherwise would be coded PA except that it is deteriorative in nature.
PD	Support item, excluding support equipment, procured for initial issue or outfitting and stocked only for subsequent or additional initial issues or outfittings. Not subject to automatic replenishment.
PE	Support equipment procured and stocked for initial issue or outfitting to specified maintenance repair activities.

PF Support equipment which will not be stocked but which will be centrally procured on demand,

PG Item procured and stocked to provide for sustained support for the life of the equipment. It is applied to an item peculiar to the equipment which, because of probable discontinuance or shutdown of production facilities, would prove uneconomical to reproduce at a later time.

KD An item of a depot overhaul/repair kit and not purchased separately. Depot kit defined as a kit that provides items required at the time of overhaul or repair.

KF An item of a maintenance kit and not purchased separately. Maintenance kit defined as a kit that provides an item that can be replaced at organizational or intermediate levels of maintenance.

KB Item included in both a depot overhaul/repair kit and a maintenance kit.

MO Item to be manufactured or fabricated at organizational level.

MF Item to be manufactured or fabricated at the direct support maintenance level.

MH Item to be manufactured or fabricated at the general support maintenance level.

MD Item to be manufactured or fabricated at the depot maintenance level.

AO Item to be assembled at organizational level.

AF Item to be assembled at direct support maintenance level.

AH Item to be assembled at general support maintenance level.

AD Item to be assembled at depot maintenance level.

XA Item is not procured or stocked because the requirements for the item will result in the replacement of the next higher assembly.

XB Item is not procured or stocked. If not available through salvage, requisition.

XD A support item that is not stocked. When required, item will be procured through normal supply channels.

NOTE

Cannibalization or salvage may be used as a source of supply for any items source coded above except those coded XA or XD.

(2) *Maintenance code.* Maintenance codes are assigned to indicate the levels of maintenance authorized to use and repair support items. The maintenance codes are entered in the third and fourth positions of the Uniform SMR Code format as follows:

(a) The maintenance code entered in the third position will indicate the lowest maintenance level authorized to remove, replace, and use the support item. The maintenance code entered in the third position will indicate one of the following levels of maintenance:

Code	Application/ Explanation
C	Crew or operator maintenance performed within organizational maintenance.
O	Support item is removed, replaced. used at the organizational level.
I	Support item is removed, replaced, used by the direct support element of integrated direct support maintenance.
F	Support item is removed, replaced, used at the direct support level.
H	Support item is removed, replaced, used at the general support level.
D	Support items that are removed, replaced, used at depot, mobile depot, specialized repair activity only.

NOTE

Codes "I" and "F" will be considered the same by direct support units.

(b) The maintenance code entered in the fourth position indicates whether the item is to be repaired and identifies the lowest maintenance level with the capability to perform complete repair (i.e., all authorized maintenance functions). This position will contain one of the following maintenance codes:

Code	Application/Explanation
O	The lowest maintenance level capable of complete repair of the support item is the organizational level.
F	The lowest maintenance level capable of complete repair of the support item is the direct support level.
H	The lowest maintenance level capable of complete repair of the support item is the general support level.
D	The lowest maintenance level capable of complete repair of the support item is the depot level.
L	Repair restricted to designated specialized repair activity.
Z	Nonreparable. No repair is authorized.
B	No repair is authorized. The item may be reconditioned by adjusting, lubricating, etc., at the user level. No parts or special tools are procured for the maintenance of this item.

(3) *Recoverability code.* Recoverability codes are assigned to support items to indicate the disposition action on unserviceable items. The recoverability code is entered in the fifth position of the Uniform SMR Code format as follows:

Recoverability

Codes	Definition
Z	Nonreparable item. When unserviceable, condemn and dispose at the level indicated in position 3.
O	Reparable item. When uneconomically repairable, condemn and dispose at organizational level.
F	Reparable item. When uneconomically repairable, condemn and dispose at the direct support level.
H	Reparable item. When uneconomically repairable, condemn and dispose at the general support level.

- D Repairable item. When beyond lower level repair capability, return to depot. Condemnation and disposal not authorized below depot level.
- L Repairable item. Repair, condemnation, and disposal not authorized below depot/specialized repair activity level.
- A Item requires special handling or condemnation procedures because of specific reasons (i.e., precious metal content, high dollar value, critical material or hazardous material). Refer to appropriate manuals/directives for specific instructions.

c. *National Stock Number.* Indicates the National stock number assigned to the item and will be used for requisitioning purposes.

d. *Part Number.* Indicates the primary number used by the manufacturer which controls the design and characteristics of the item by means of its engineering drawings, specifications standards, and inspection requirements to identify an item or range of items.

NOTE

When a stock numbered item is requisitioned, the repair part received may have a different part number than the part being replaced.

e. *Federal Supply Code for Manufacturer (FSCM).* The FSCM is a 5-digit numeric code listed in SB 708-42 which is used to identify the manufacturer, distributor, or Government agency, etc.

f. *Description.* Indicates the Federal item name and, if required, a minimum description to identify the item. Items that are included in kits and sets are listed below the name of the kit or set with the quantity of each item in the kit or set indicated in the quantity incorporated in unit column. When the part to be used differs between serial numbers of the same model, the effective serial numbers are shown as the last line of the description. In the Special Tools List, the initial basis of issue (BOI) appears as the last line in the entry for each special tool, TMDE, and support equipment. When density of equipments supported exceeds density spread indicated in the basis of issue, the total authorization is increased accordingly.

g. *Unit of Measure (U/M).* Indicates the standard of the basic quantity of the listed item as used in performing the actual maintenance function. This measure is expressed by a two-character alphabetical abbreviation (e.g., ea, in, pr, etc.). When the unit of measure differs from the unit of issue, the lowest unit of issue that will satisfy the required units of measure will be requisitioned.

h. *Quantity Incorporated in Unit.* Indicates the quantity of the item used in the breakout shown on the illustration figure, which is prepared for a functional group, subfunctional group, or an assembly. A "V" appearing in this column in lieu of a quantity indicates that no specific quantity is applicable, (e.g., shims, spacers, etc.).

4. Special Information.

a. Repair parts kits and gasket sets appear as the last entries in the repair parts listing for the figure in which its parts are listed as repair parts or are listed at the end of the repair parts listing for the last figure containing parts of the kit.

b. The following publications pertain to air compressor and its components:

- LO 5-4310-3652-12 Lubrication Order
- TM 5-4310-352-14 Operator's Manual

5. How to Locate Repair Parts.

a. *When National Stock Number or Part Number is Unknown:*

(1) *First.* Using the table of contents, determine the functional group within which the repair part belongs. This is necessary since illustrations are prepared for functional groups, and listings are divided into the same groups.

(2) *Second.* Find the illustration covering the functional group to which the repair part belongs.

(3) *Third.* Identify the repair part on the illustration and note the illustration figure and item number of the repair part.

(4) *Fourth.* Using the Repair Parts Listing, find the figure and item number noted on the illustration.

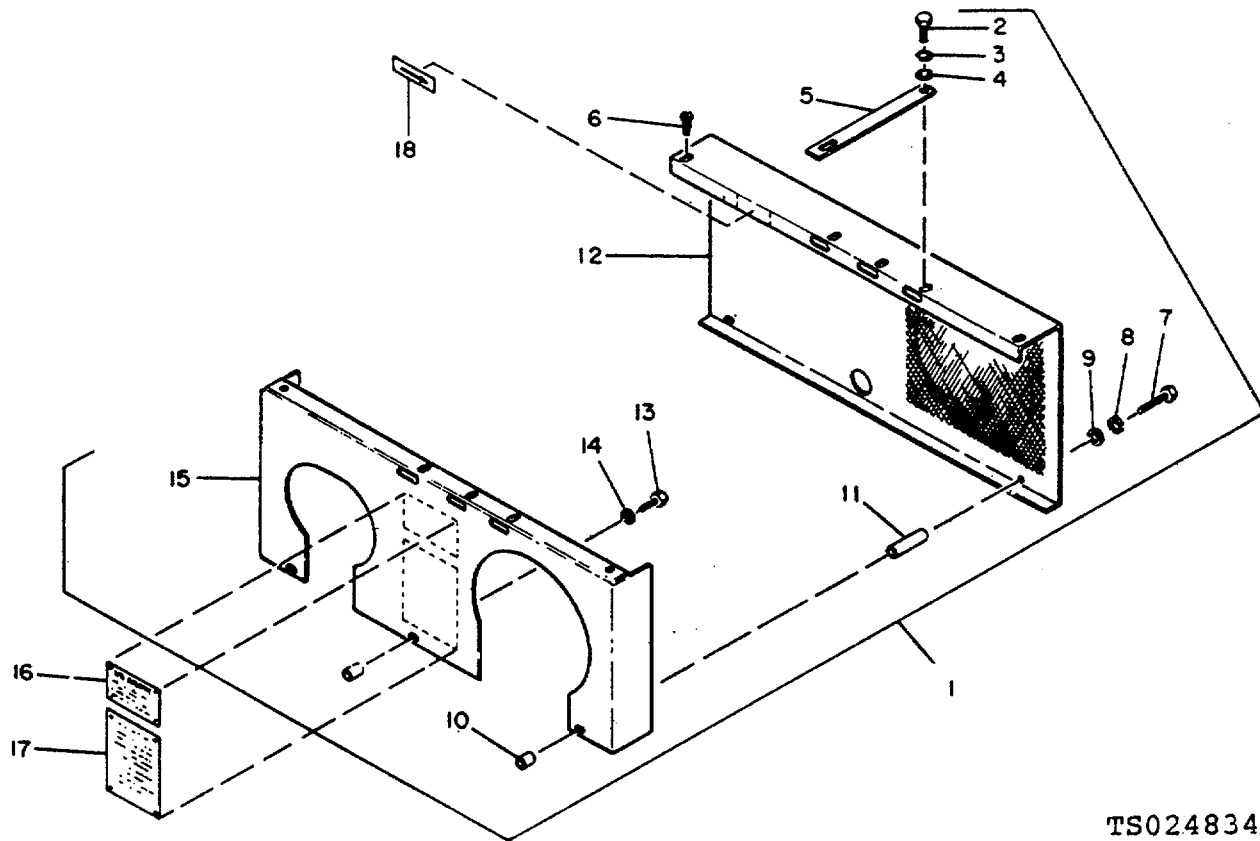
b. *When National Stock Number or Part Number is Known.*

(1) *First.* Using the Index of National Stock Numbers and Part Numbers, find the pertinent National stock number or part number. This index is in ascending NSN sequence followed by a list of part numbers in ascending alphanumeric sequence, cross-referenced to the illustration figure number and item number.

(2) *Second.* After finding the figure and item number, locate the figure and item number in the repair parts list.

6. Abbreviations.

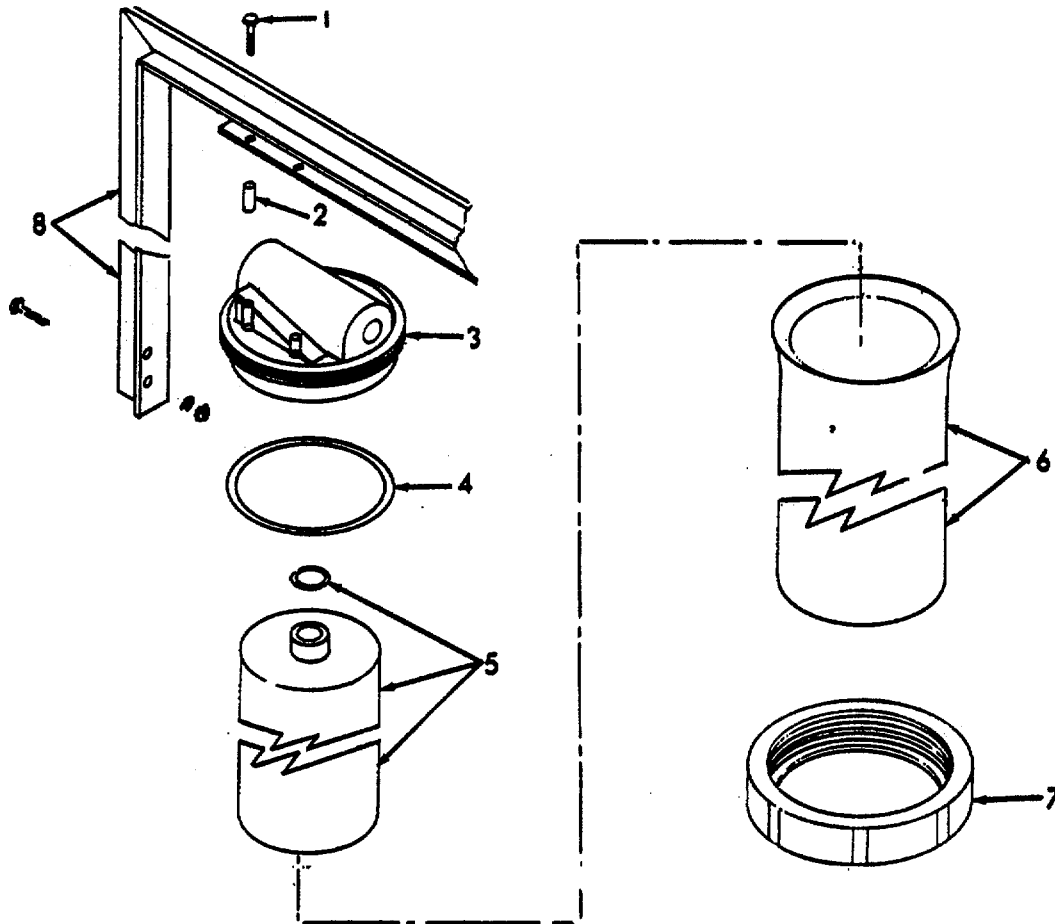
ea	each
gd	guard
hd	head
mtg	mounting
P/N	Part Number
w/	with



TS024834.

(1) ILLUSTRATION		(2)	(3)	(4)	(5)	(6)	(7)	(8)
(a) FIG NO.	(b) ITEM NO.	SMR CODE	NATIONAL STOCK NUMBER	PART NUMBER	FSCM	DESCRIPTION	U/M	QTY INC IN UNIT
						Usable On Code		
						Section II. ORGANIZATIONAL, DS & GS MAINTENANCE GROUP: 01 GUARD		
1	1	XBOZZ		3W75478T7E	51436	BELT GUARD ASSEMBLY	EA	1
1	2	PAOZZ	5305-00-269-3214	MS90725-64	96906	SCREW, CAP: BRACE MTG	EA	1
1	3	PAOZZ	5310-00-637-9541	MS35338-46	96906	WASHER, LOCK: BRACE MTG	EA	1
1	4	PAOZZ	5310-00-950-1310	MS27183-4	96906	WASHER, FLAT: BRACE MTG	EA	1
1	5	XBOZZ		3W75424T3	51436	BRACE: BELT GUARD	EA	1
1	6	XBOZZ		3W99597T12	51436	SCREW, THREAD FORMING	EA	2
1	7	XBOZZ		35A2C130	51436	SCREW, CAP: BELT GUARD MTG	EA	2
1	8	PAOZZ	5310-00-013-8002	14A5C76	51436	WASHER, LOCK: BELT GD MTG	EA	2
1	9	PAOZZ	5310-00-080-6004	12A5C4	51436	WASHER, FLAT: BELT GUARD MTG	EA	2
1	10	XBOZZ		3W75479T4	51436	SPACER: BELT GUARD	EA	2
1	11	XBOZZ		3W75479T13	51436	SPACER: BELT GUARD	EA	3
1	12	XBOZZ		3W39875	51436	GUARD, BELT	EA	1
1	13	PAOZZ	5305-00-001-5515	35A2C115	30760	SCREW, CAP: BACK BELT GD	EA	1
1	14	PAOZZ	5310-00-013-8002	14A5C76	51436	WASHER, LOCK: BACK BELT GD	EA	1
1	15	XBOZZ		3H12718	51436	GUARD, BELT BACK	EA	1
1	16	XBOZZ		3W114436	51436	PLATE, INSTRUCTION	EA	1
1	17	XBOZZ		3W114405	51436	PLATE, IDENTIFICATION	EA	1
1	18	XBOZZ		3W45928	51436	ARROW, DIRECTION	EA	1

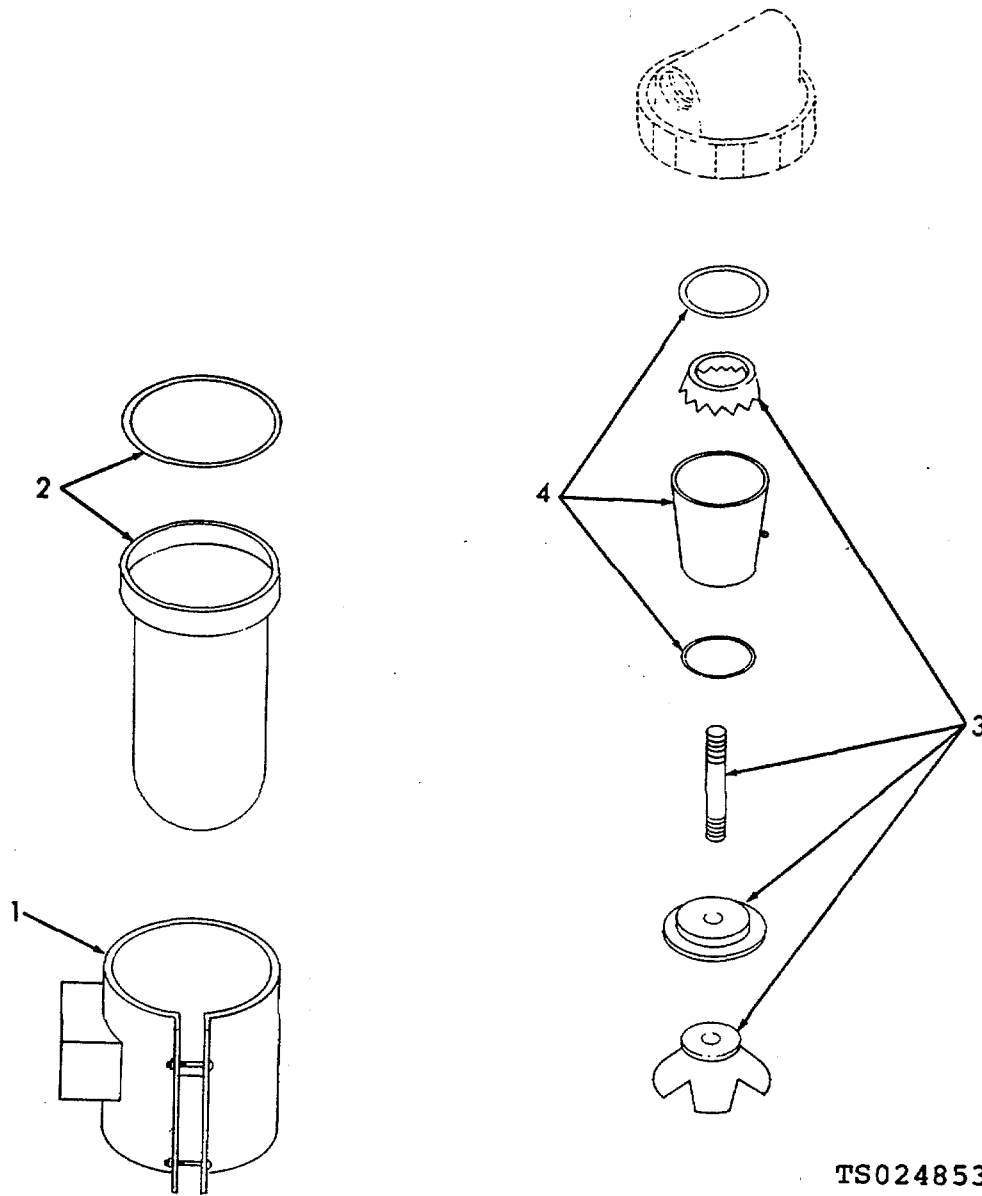
Figure 1. Belt guard assembly.



TS024852

(1) ILLUSTRATION		(2)	(3)	(4)	(5)	(6)	(7)	(8)
(a) FIG NO.	(b) ITEM NO.	SMR CODE	NATIONAL STOCK NUMBER	PART NUMBER	FSCM	DESCRIPTION	U/M	QTY INC IN UNIT
						Usable On Code		
						GROUP: 02 DEHYDRATOR		
2	1	XBFZZ		35A2C10	51436	BOLT, MACHINE	EA	8
2	2	XBFZZ		3W114468	51436	SPACER, DEHYDRATOR	EA	8
2		PAFZZ		R57243	51436	DEHYDRATOR ASSEMBLY	EA	2
2	3	XAFZZ		R57243T1	51436	HEAD, DEHYDRATOR	EA	2
2	4	PAOZZ		R57243T2	51436	GASKET, VESSEL	EA	2
2	5	PAFZZ		R57243T3	51436	CARTRIDGE, DEHYDRATOR	EA	2
2	6	XAFZZ		R57243T4	51436	VESSEL, DEHYDRATOR	EA	2
2	7	XAFZZ		R57243T5	51436	NUT, RING	EA	2
2	8	XBFZZ		R57243T6	51436	BRACKET, DEHYDRATOR MTG	EA	1

Figure 2. Dehydrator assembly.



(1) ILLUSTRATION		(2)	(3)	(4)	(5)	(6)	(7)	(8)
(a) FIG NO.	(b) ITEM NO.	SMR CODE	NATIONAL STOCK NUMBER	PART NUMBER	FSCM	DESCRIPTION Usable On Code	U/M	QTY INC IN UNIT
3		PAFZZ		R57242	51436	FILTER W/HEATER	EA	1
3	1	XBFZZ		500W/115V	51436	HEATER W. JUNCTION BOX	EA	1
3	2	XBFZZ		BK603Y	51436	BOWL, AIR FILTER	EA	1
3	3	XBFZZ		RK602Y	51436	BAFFLE, AIR FILTER	EA	1
3	4	XBFZZ		EK602Y	51436	FILTER ELEMENT	EA	1

Figure 3. Air filter assembly, with heater.

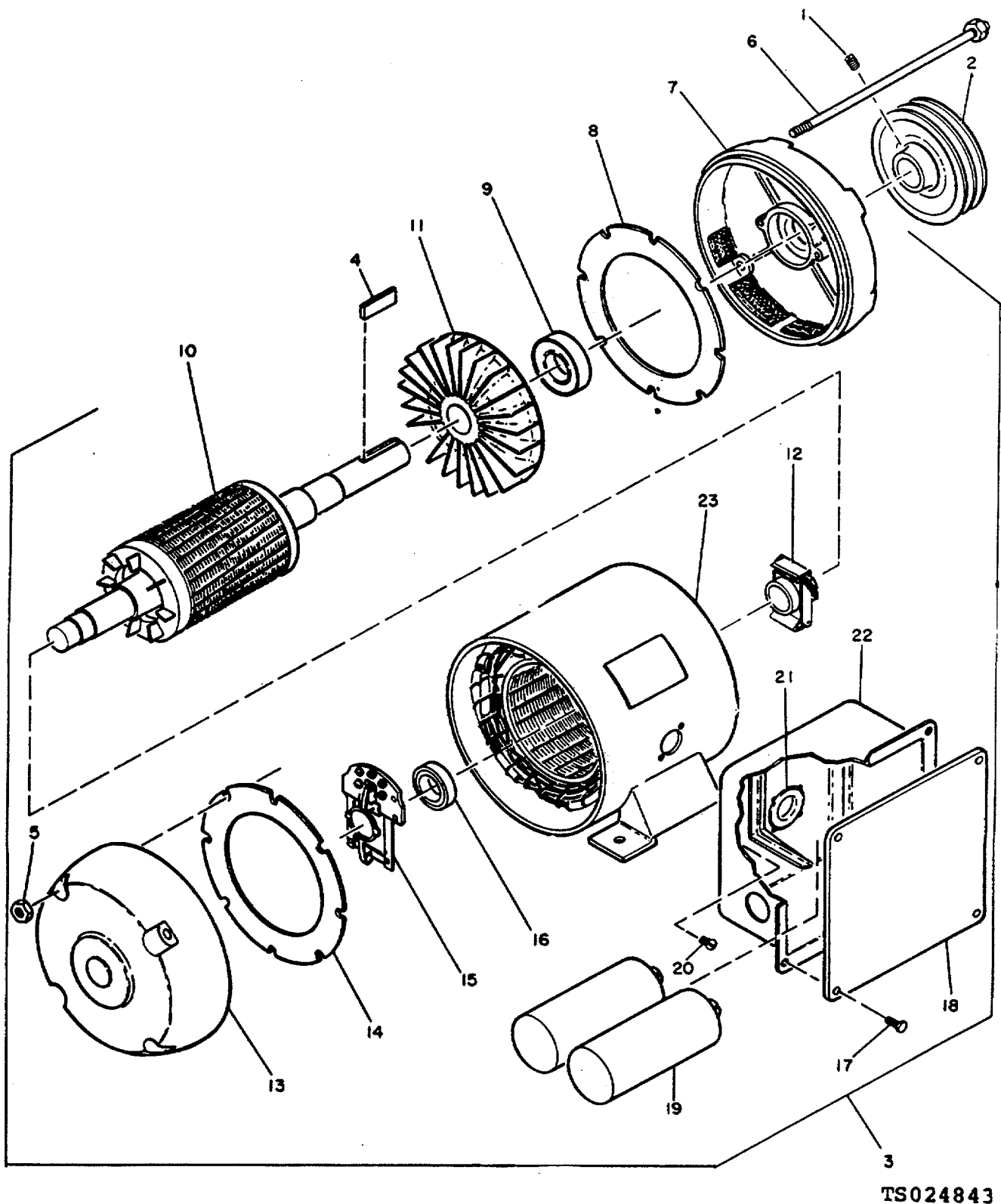
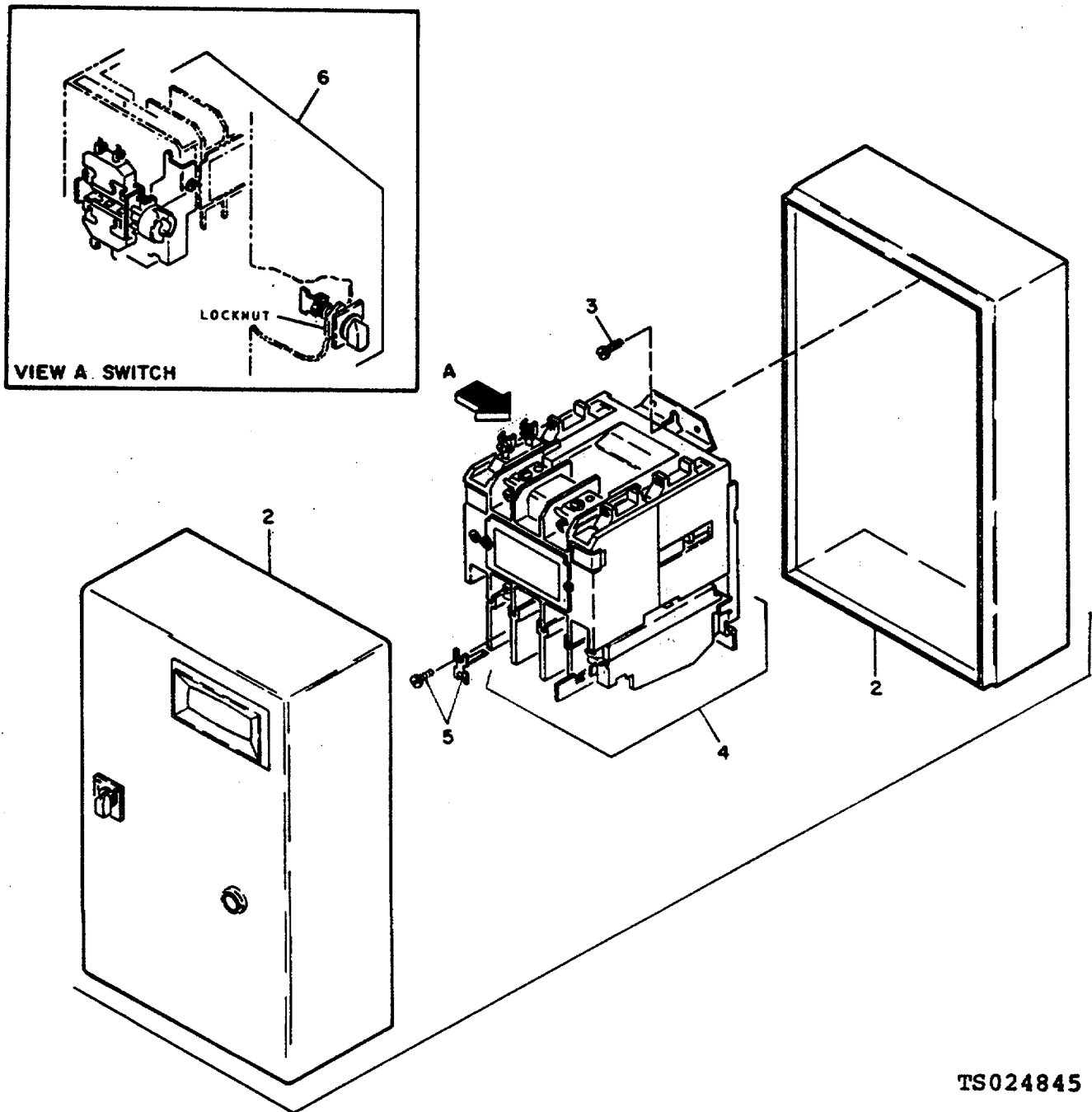


Figure 4. Compressor motor.

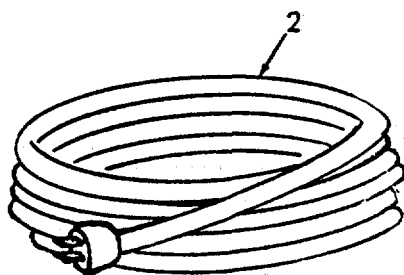
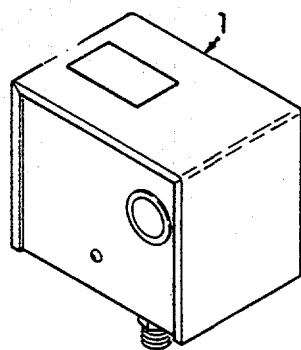
(1) ILLUSTRATION		(2)	(3)	(4)	(5)	(6)	(7)	(8)
(a) FIG NO.	(b) ITEM NO.	SMR CODE	NATIONAL STOCK NUMBER	PART NUMBER	FSCM	DESCRIPTION Usable On Code	U/M	QTY INC IN UNIT
4	1	PAFZZ	5305-01-015-6549	109A290	51436	GROUP: 03 ELECTRIC MOTOR AND RELATED PARTS	EA	1
4	2	XBFZZ		3H12422-2A543-112	51436	SCREW, SET	EA	1
4	3	PBOLZ	6105-00-274-4974	182TCDR7072	38151	PULLEY, MOTOR	EA	1
4	4	XBFZZ		91385088	38151	MOTOR ASSEMBLY	EA	1
4	5	XBFZZ		9186271-4	38151	KEY, MOTOR	EA	1
4	6	XBFZZ		9120796-7	38151	NUT	EA	2
4	7	XBFZZ		6102259-6	38151	STUD	EA	4
4	8	XBFZZ		9222490-6	38151	BRACKET, REAR	EA	1
4	9	XBFZZ		911177-7	38151	BAFFLE, REAR	EA	1
4	10	XBFZZ		5022519-2	38151	BALL, BEARING, REAR	EA	1
4	11	XBFZZ		9241290-7	38151	ROTOR ASSEMBLY	EA	1
4	12	XBFZZ		5900054-7	38151	FAN, MOTOR	EA	1
4	13	XBFZZ		6102608-4	38151	DEVICE, CENTRIFUGAL	EA	1
4	14	XBFZZ		9222510-1	38151	BRACKET, FRONT	EA	1
4	15	PAFZZ	5930-01-018-5170	6200019-5	38151	BAFFLE, FRONT	EA	1
4	16	XBFZZ		9111771-3	38151	SWITCH ASSEMBLY, STATIONARY	EA	1
4	17	XBFZZ		9185582-5	38151	BALL BEARING, FRONT	EA	1
4	18	XBFZZ		9222640-6	38151	SCREW	EA	4
4	19	PAFZZ	5910-00-256-0293	9115630-7	38151	COVER, CONDUIT BOX	EA	1
4	20	XBFZZ		9185462-0	38151	CAPACITOR	EA	2
4	21	XBFZZ		9137316-7	38151	SCREW	EA	2
4	22	XBFZZ		9168160-1	38151	GASKET	EA	1
4	23	XAFZZ		4024252-1	38151	BASE, CONDUIT BOX	EA	1
						STATOR BODY ASSEMBLY	EA	1



TS024845

(1) ILLUSTRATION		(2)	(3)	(4)	(5)	(6)	(7)	(8)
(a) FIG NO.	(b) ITEM NO.	SMR CODE	NATIONAL STOCK NUMBER	PART NUMBER	FSCM	DESCRIPTION Usable On Code	U/M	QTY INC IN UNIT
5	1	PBFZZ		T13TB21-76	12584	STARTER ASSEMBLY	EA	1
5	2	XBFZZ		KTM122-1	12584	KIT, ENCLOSURE	EA	1
5	3	XBFZZ		T147-8	12584	SCREW, MOUNTING	EA	1
5	4	PBFZZ	6110-00-257-3715	T13U021-76	12584	STARTER, OPEN	EA	1
5	5	PAFZZ	4520-01-018-9007	2452	12584	ELEMENT, HEATER	EA	1
5	6	XBFZZ		KTM7	12584	KIT, SELECTOR SWITCH	EA	1

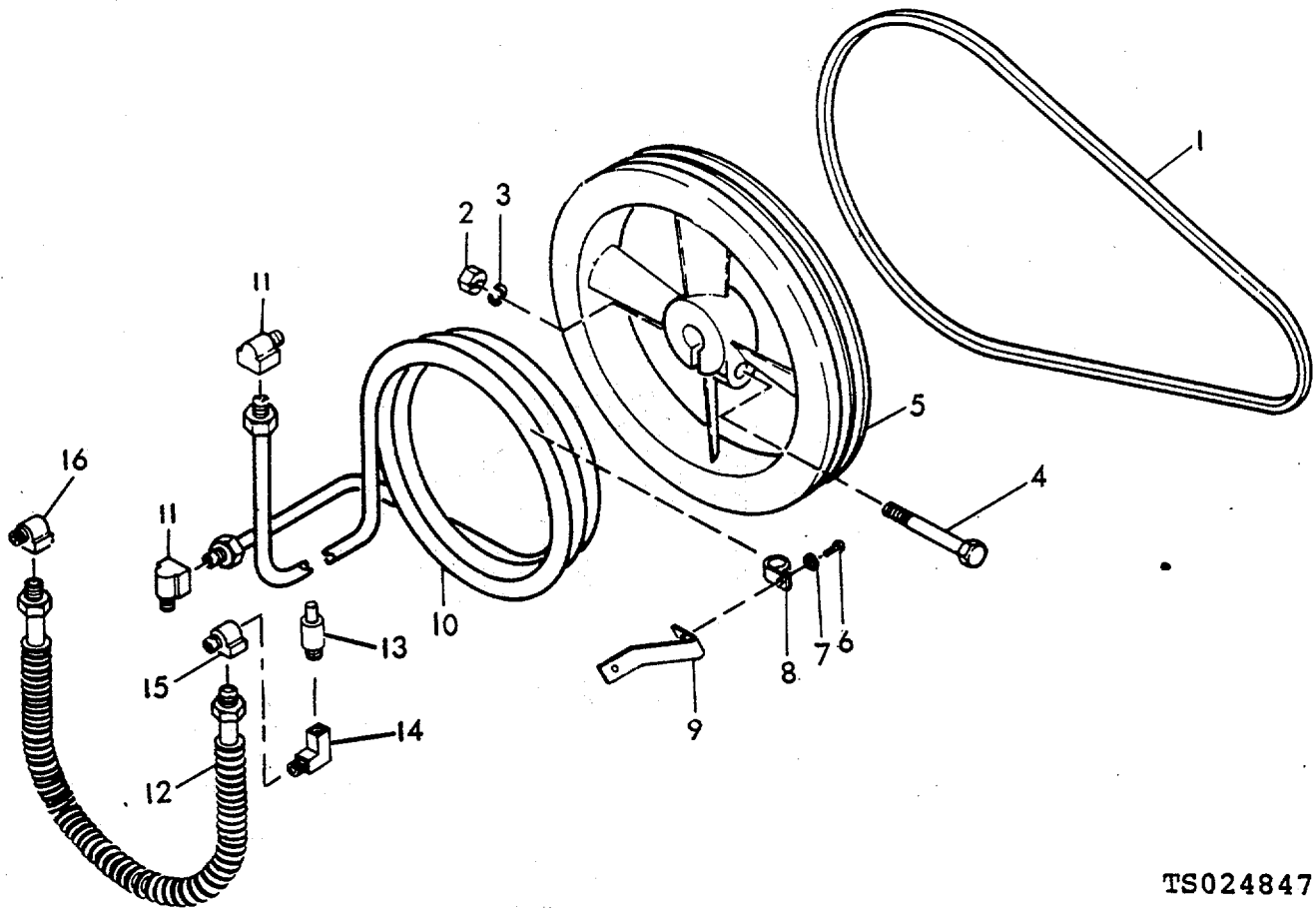
Figure 5. Starter and selector switch assembly.



TS024854

(1) ILLUSTRATION		(2)	(3)	(4)	(5)	(6)	(7)	(8)
(a) FIG NO.	(b) ITEM NO.	SMR CODE	NATIONAL STOCK NUMBER	PART NUMBER	FSCM	DESCRIPTION Usable On Code	U/M	QTY INC IN UNIT
6	1	PBFZZ		830C5900	01121	SWITCH, PRESSURE	EA	1
6	2	PAFZZ		3W114448	51436	CABLE, POWER SUPPLY	EA	1

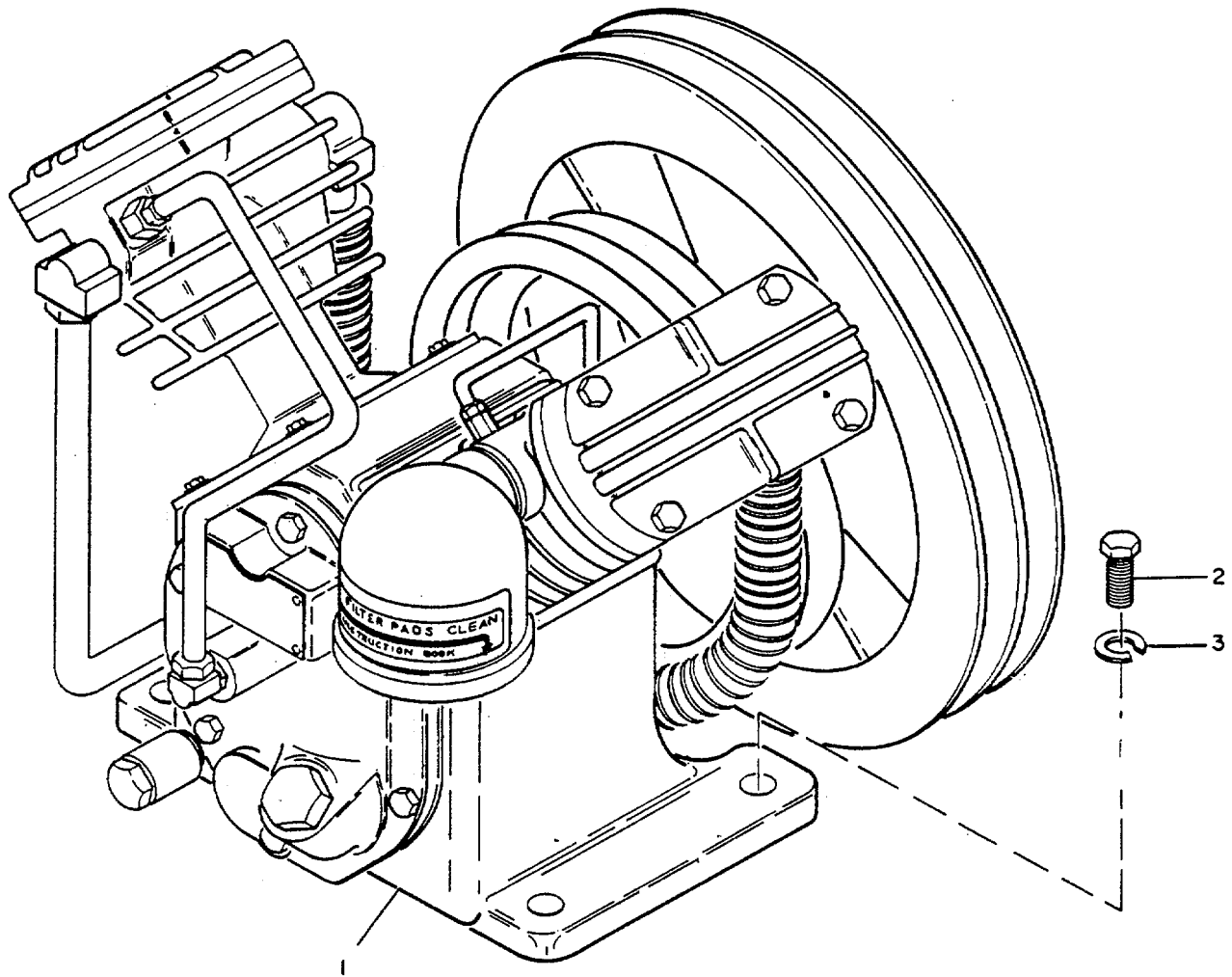
Figure 6. Pressure Switch.



TS024847

(1) ILLUSTRATION		(2)	(3)	(4)	(5)	(6)	(7)	(8)
(a) FIG NO.	(b) ITEM NO.	SMR CODE	NATIONAL STOCK NUMBER	PART NUMBER	FSCM	DESCRIPTION Usable On Code	U/M	QTY INC IN UNIT
						GROUP: 04 AIR COMPRESSOR ASSEMBLY		
7	1	PAOZZ	3030-00-278-1670	MS39255-2A68	96906	BELT, "V"	EA	2
7	2	PAOZZ	5310-00-004-3099	MS51967-14	96906	NUT	EA	1
7	3	PAOZZ	5310-00-543-2410	MS35338-40	96906	WASHER, LOCK	EA	1
7	4	PAOZZ	5305-00-071-1774	MS90725-121	96906	SCREW, CAP	EA	1
7	5	XBFZZ		3R8172	51436	WHEEL, V-BELT	EA	1
7	6	XBFZZ		83A2C69	51436	SCREW, CAP	EA	2
7	7	PAOZZ	5310-00-045-3299	MS35338-42	96906	WASHER, LOCK INTERNAL: CLAMP AND BRACE MTG	EA	2
7	8	XBFZZ		CW0805	51436	CLAMP, AFTERCOOLER	EA	3
7	9	XBFZZ		R53561	51436	BRACE, AFTERCOOLER	EA	1
7	10	XBFZZ		H36319	51436	AFTERCOOLER, AIR COOLED	EA	1
7	11	XBFZZ		X1506IE8	51436	ELBOW, TUBE	EA	2
7	12	XBFZZ		X1434T71	51436	TUBE, INTERCOOLER	EA	1
7	13	PAOZZ	4310-00-006-3678	X139T28-60	51436	VALVE, SAFETY	EA	1
7	14	XBOZZ		67A1M2	51436	ELBOW, STREET	EA	1
7	15	XBOZZ		X1506IF12	51436	ELBOW, TUBE	EA	1
7	16	XBOZZ		3W11282	51436	ELBOW, TUBE	EA	1

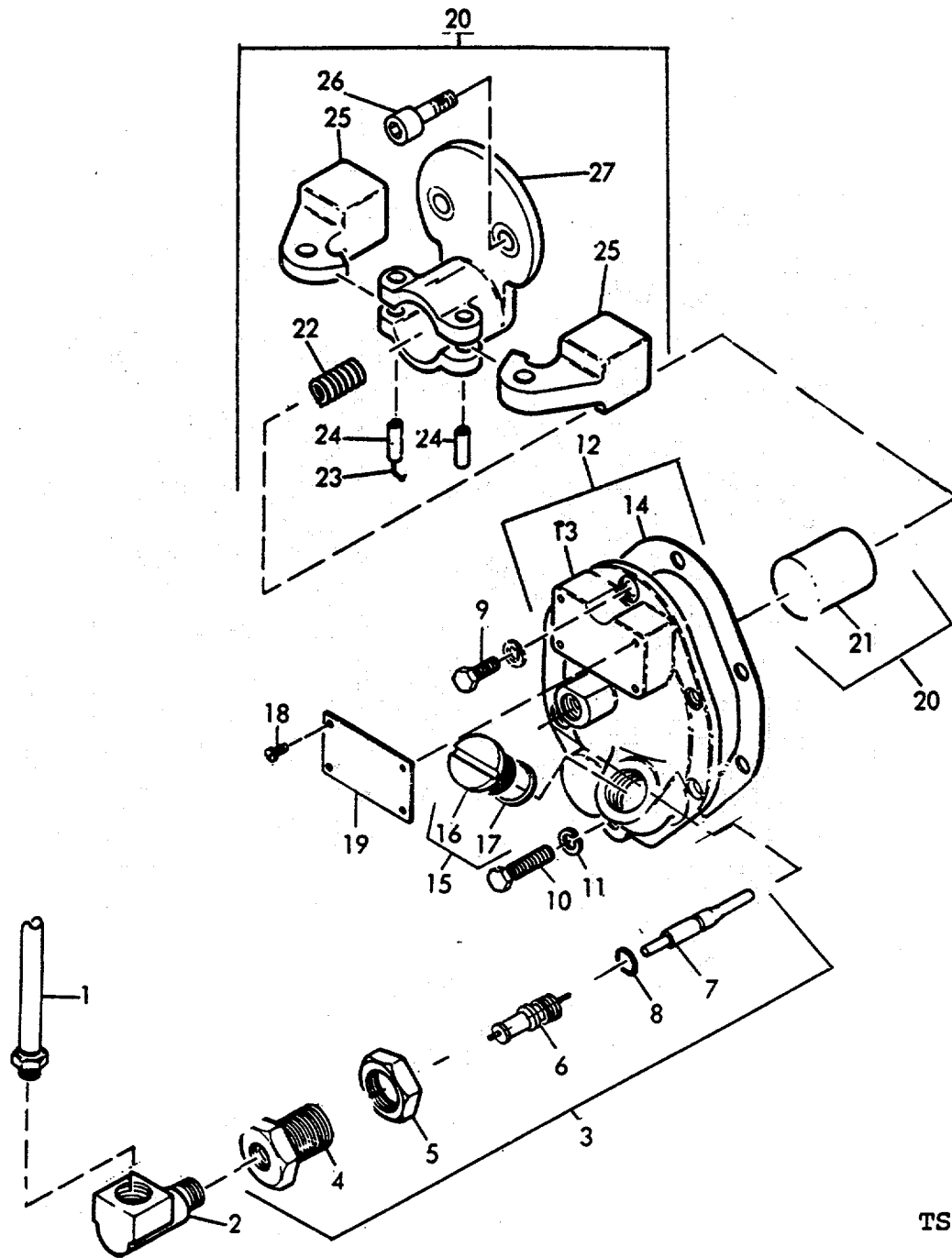
Figure 7. V-Belts, aftercooler and intercooler.



TS024840

(1) ILLUSTRATION		(2)	(3)	(4)	(5)	(6)	(7)	(8)
(a) FIG NO.	(b) ITEM NO.	SMR CODE	NATIONAL STOCK NUMBER	PART NUMBER	FSCM	DESCRIPTION Usable On Code	U/M	QTY INC IN UNIT
8	1	PBOFH	4310-00-255-0434	L49780	51436	COMPRESSOR, BARE	EA	1
8	2	PAOZZ	5313-00-171-2243	MS90725-11	96906	SCREW, CAP	EA	4
8	3	PAOZZ	5310-00-584-5272	MS35338-48	96906	WASHER, LOCK	EA	4

Figure 8. Air compressor.

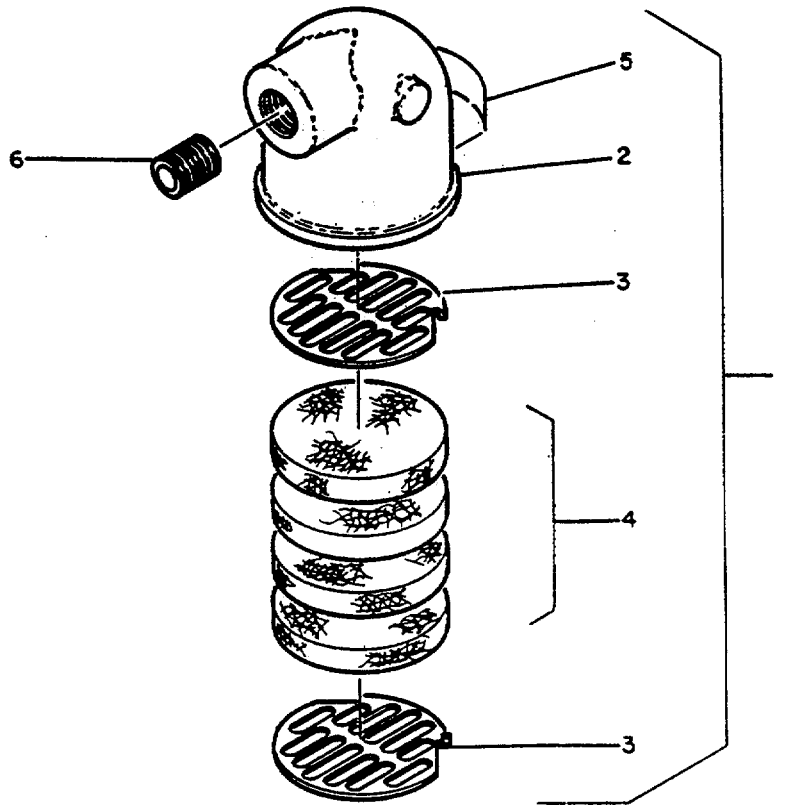


TS024842

(1) ILLUSTRATION		(2)	(3)	(4)	(5)	(6)	(7)	(8)
(a) FIG NO.	(b) ITEM NO.	SMR CODE	NATIONAL STOCK NUMBER	PART NUMBER	FSCM	DESCRIPTION Usable On Code	U/M	QTY INC IN UNIT
9	1	XBFZZ		3W75256T2	51436	TUBE, PILOT VALVE	EA	1
9	2	XBFZZ		X1506IE5	51436	ELBOW, TUBE	EA	1
9	3	XBFZZ		3R53608T10	51436	PILOT VALVE ASSEMBLY	EA	1
9	4	XBFZZ		3W99652T20	51436	BODY	EA	1
9	5	XBOZZ		3W99652T10	51436	NUT, LOCK	EA	1

Figure 9. Pilot valve, centrifugal unloader and frame end covers.

(1) ILLUSTRATION		(2)	(3)	(4)	(5)	(6)	(7)	(8)
(a) FIG NO.	(b) ITEM NO.	SMR CODE	NATIONAL STOCK NUMBER	PART NUMBER	FSCM	DESCRIPTION Usable On Code	U/M	QTY INC IN UNIT
9	6	XBOZZ		3W53608T10	51436	CORE, VALVE	EA	1
9	7	XBOZZ		3R53528	51436	PIN, THRUST	EA	1
9	8	XBFZZ		20A11CM006	51436	O-RING	EA	1
						PART OF SET P/N X1453T6		
9	9	PAFZZ	5306-00-225-8497	MX90725-32	96906	SCREW, CAP	EA	6
9	10	PAOZZ	5305-00-225-9081	MX90725-36	96906	SCREW, CAP	EA	1
9	11	XBOZZ		X1016T33	51436	WASHER, STEEL	EA	6
9	12	XBOZZ		3W75292T10	51436	COVER, FRAME END ASSEMBLY	EA	1
9	13	XBOZZ		3H22670	51436	COVER, FRAME END	EA	1
9	14	XFFZZ		3R40620	51436	GASKET	EA	1
						PART OF SET P/N X1453T6		
9	15	XBOZZ		3W75294T10	51436	PLUG, OIL FILTER ASSEMBLY	EA	1
9	16	XBOZZ		3W82	51436	PLUG	EA	1
9	17	XFFZZ		20A11CM212	51436	O-RING	EA	1
						PART OF SET P/N X1453T6		
9	18	XBFZZ		3W34427	51436	SCREW, DRIVE	EA	1
9	19	XBOZZ		7A16X184	51436	PLATE, IDENTIFICATION	EA	1
9	20	XBFZZ		3W75288T20	51436	CRANK PIN CAP ASSEMBLY	EA	1
9	21	XBFZZ		3W75306	51436	PLUNGER	EA	1
9	22	XBFZZ		X1091PP311	51436	SPRING	EA	1
9	23	XBFZZ		12X4	51436	WIRE, LOCK	EA	1
9	24	XBFZZ		3W75308	51436	PIN	EA	2
9	25	XBFZZ		3W75307	51436	WEIGHT	EA	2
9	26	PAFZZ	5305-01-015-6550	91A2A146N	51436	SREW, HEX SOCKET	EA	2
9	27	XBFZZ		3W75310	51436	CAP, CRANK PIN	EA	1



TS024839

(1) ILLUSTRATION		(2)	(3)	(4)	(5)	(6)	(7)	(8)
(a) FIG NO.	(b) ITEM NO.	SMR CODE	NATIONAL STOCK NUMBER	PART NUMBER	FSCM	DESCRIPTION Usable On Code	U/M	QTY INC IN UNIT
10	1	XBOZZ	4310-00-253-0871	3W75298T40	51436	FILTER ASSEMBLY	EA	1
10	2	XAFZZ		3W11558	51436	BODY	EA	1
10	3	XBFZZ		3W60504	51436	DISC	EA	2
10	4	PAOZZ		3W60506	51436	PAD, MUFFLER, FILTER	EA	1
10	5	XBOZZ		3W75251	51436	PLATE	EA	1
10	6	XBFZZ		18A7W5	51436	NIPPLE	EA	1

Figure 10. Inlet filter assembly.

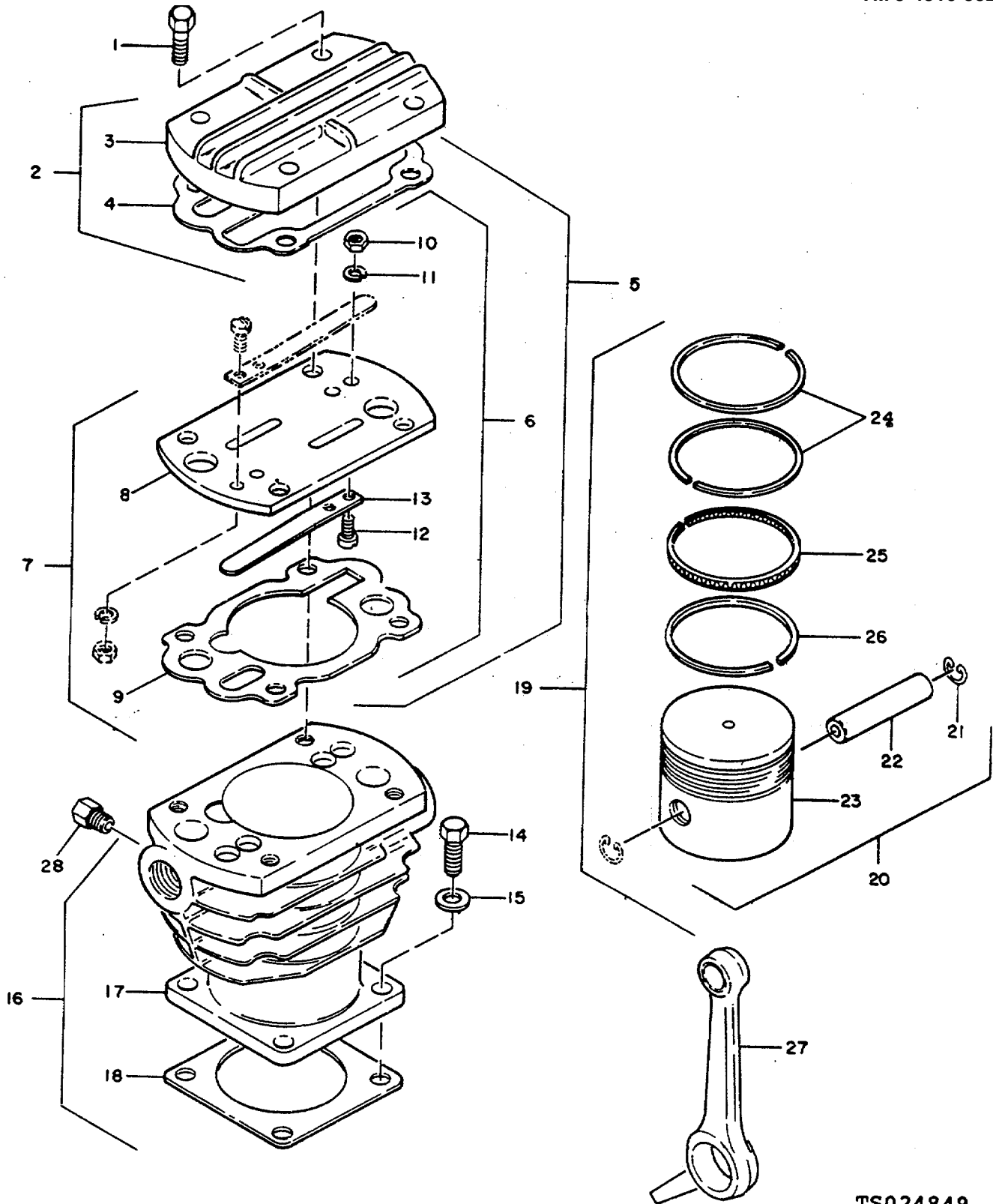


Figure 11. L.P. Piston, cylinder and rod assembly.

TS024849

(1) ILLUSTRATION		(2)	(3)	(4)	(5)	(6)	(7)	(8)
(a) FIG NO.	(b) ITEM NO.	SMR CODE	NATIONAL STOCK NUMBER	PART NUMBER	FSCM	DESCRIPTION Usable On Code	U/M	QTY INC IN UNIT
11	1	PAOZZ	5305-00-001-5115	35A2C115	51436	SCREW, CAP	EA	4
11	2	XBOZZ		3W75302T30	51436	AIR HEAD ASSEMBLY	EA	1
11	3	XBFZZ		3R4081	51436	AIR HEAD	EA	1
11	4	XBFZZ		3W6870	51436	GASKET, AIR HEAD PART OF SET P/N X1453T6	EA	1
11	5	XBFZZ		3W75299T30	51436	SPACER, VALVES, HD GASKET ASSEMBLY	EA	1
11	6	XBFZZ		3W75299T30X	51436	SPACER AND VALVE ASSEMBLY	EA	1
11	7	XBFZZ		3W75299T30S	51436	SPACER ASSEMBLY	EA	1
11	8	XBFZZ		3W6866	51436	SPACER	EA	1
11	9	KFFZZ		3W6869	51436	GASKET PART OF SET P/N X1453T6	EA	1
11	10	PAFZZ	5310-00-761-6882	MS51967-2	96906	NUT	EA	4
11	11	PAFZZ	5310-00-582-5965	MS35338-44	96906	WASHER, LOCK	EA	4
11	12	PAFZZ	3305-01-015-6551	87A2X144P	51436	SCREW, FILLISTER HEAD	EA	4
11	13	XBFZZ		3W6874	51436	VALVE	EA	2
11	14	PAFZZ	5305-00-269-3210	MS90725-59	96906	SCREW, CAP	EA	4
11	15	XBFZZ		X1016T34	51436	WASHER, STEEL	EA	4
11	16	XBFZZ		3W75296T50	51436	CYLINDER ASSEMBLY	EA	1
11	17	XAFZZ		3R4080	51436	CYLINDER	EA	1
11	18	KFFZZ		3W75330	51436	GASKET PART OF SET P/N X1453T6	EA	1
11	19	PBFZZ	4310-00-255-0436	3W75295T30R	51436	PISTON AND RING ASSEMBLY	EA	1
11	20	XAFZZ		3W75295T20	51436	PISTON ASSEMBLY	EA	1
11	21	XAFZZ		3W11859	51436	RING, LOCK	EA	2
11	22	XBFZZ		3W11857	51436	PIN, PISTON	EA	1
11	23	XAFZZ		D36903	51436	PISTON	EA	1
11	24	KFFZZ		X1440T468	51436	RING, COMPRESSION PART OF SET P/N X1457T7A	EA	2
11	25	KFFZZ		X1440T46H	51436	RING, OIL PART OF SET P/N X1457T7A	EA	1
11	26	KFFZZ		X1440T46H	51436	RING, OIL PART OF SET P/N X1457T7A	EA	1
11	27	XBFZZ		3W114089T10	51436	ROD, CONNECTING	EA	1
11	28	XBFZZ		1506I05	51436	CONNECTOR, TUBE	EA	1

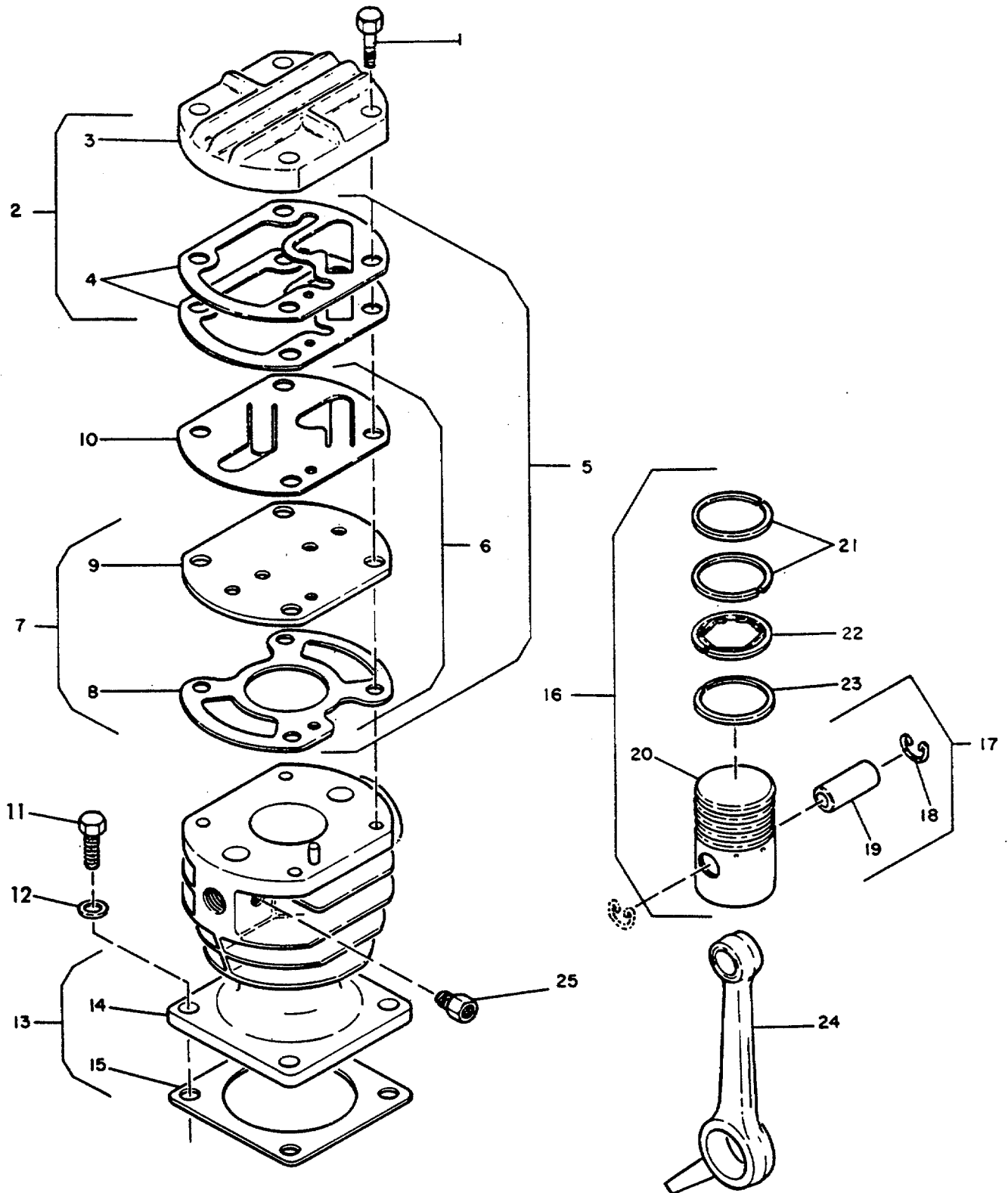
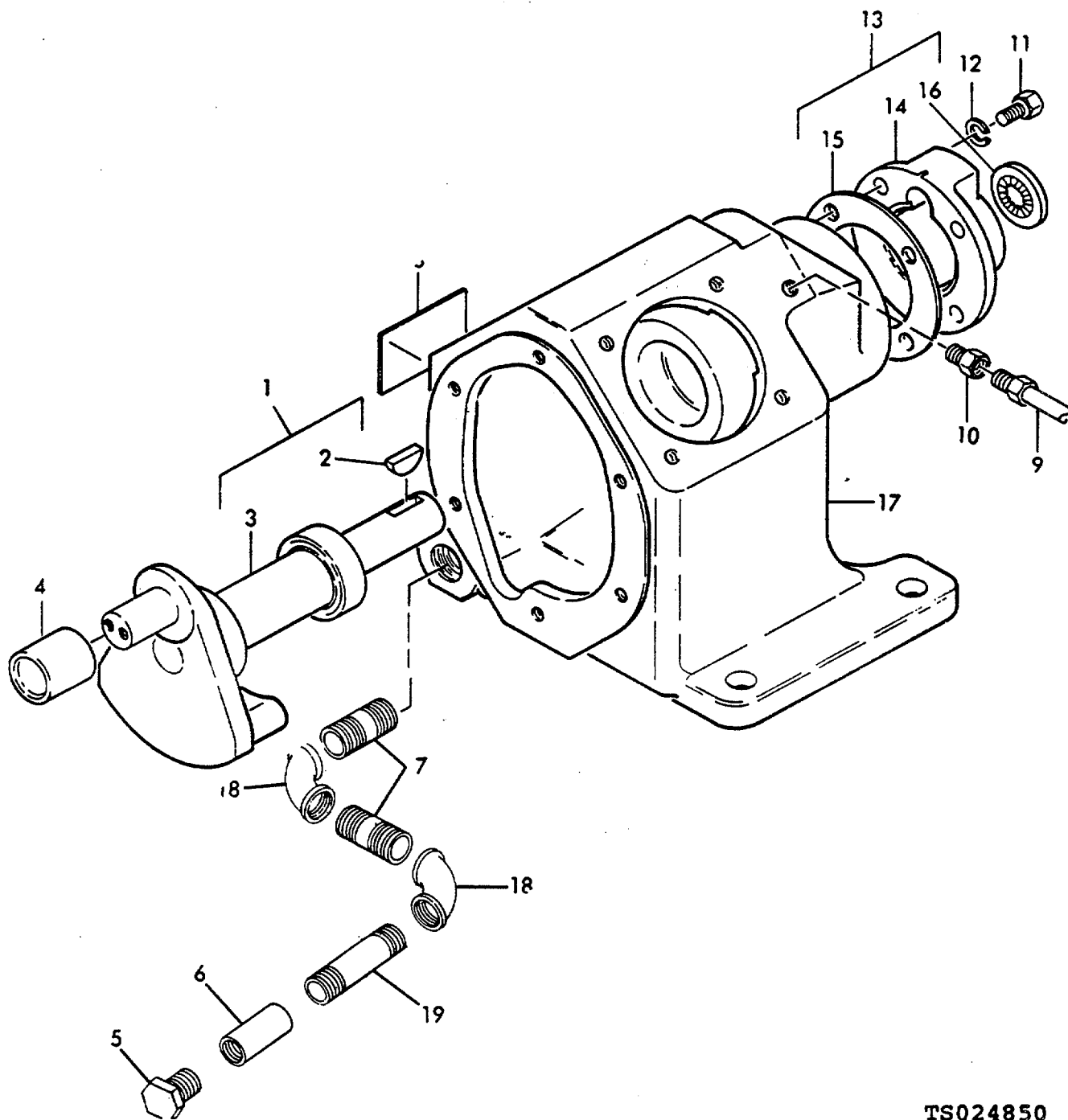


Figure 12. H.P. Piston, cylinder and rod assembly.

TS024848

(1) ILLUSTRATION		(2)	(3)	(4)	(5)	(6)	(7)	(8)
(a) FIG NO.	(b) ITEM NO.	SMR CODE	NATIONAL STOCK NUMBER	PART NUMBER	FSCM	DESCRIPTION Usable On Code	U/M	QTY INC IN UNIT
12	1	PAFZZ	5305-00-001-5115	35A2C115	30760	SCREW, CAP	EA	4
12	2	XBFZZ		3W75302T30	51436	AIR HEAD ASSEMBLY	EA	1
12	3	XAFZZ		3W75319	51436	AIR HEAD	EA	1
12	4	KFFZZ		3W11477	51436	GASKET, AIR HEAD PART OF SET P/N X1453T6	EA	2
12	5	XBFZZ		3W75299T20	51436	SPACER, VALVES, HD GASKET ASSEMBLY	EA	1
12	6	XBFZZ		3W75299T20X	51436	SPACER AND VALVE ASSEMBLY	EA	1
12	7	XBFZZ		3W75299T20S	51436	SPACER ASSEMBLY	EA	1
12	8	KFFZZ		3W11478	51436	GASKET, SPACER PART OF SET P/N X1453T6	EA	1
12	9	XAFZZ		3W75317	51436	SPACER	EA	1
12	10	XBFZZ		3W75318	51436	VALVE, PLATE	EA	1
12	11	PAFZZ	5305-01-015-5382	35A2C110	51436	SCREW, CAP	EA	4
12	12	XBFZZ		X1016T34	51436	WASHER, STEEL	EA	4
12	13	XBFZZ		3W75296T35	51436	CYLINDER ASSEMBLY	EA	1
12	14	XBFZZ		3R4079	51436	CYLINDER	EA	1
12	15	KFFZZ		3W75330	51436	GASKET PART OF SET P/N X1453T6	EA	1
12	16	PBFZZ	4310-00-255-0436	3W75295T10R	51436	PISTON AND RING ASSEMBLY	EA	1
12	17	XAFZZ		3W75295T10	51436	PISTON ASSEMBLY	EA	1
12	18	KBFZZ		3W11859	51436	RING, LOCK	EA	2
12	19	XBFZZ		3W11858	51436	PIN	EA	1
12	20	XAFZZ		D36945	51436	PISTON	EA	1
12	21	KFFZZ		X1440T288	51436	RING, COMPRESSION PART OF SET P/N X1457T7A	EA	2
12	22	KFFZZ		X1440T28K	51436	RING, OIL PART OF SET P/N X1457T7A	EA	1
12	23	KFFZZ		X1440T28H	51436	RING, OIL PART OF SET P/N X1457T7A	EA	1
12	24	XAFZZ		3W114089T10	51436	ROD, CONNECTING	EA	1
12	25	XBFZZ		X1506IC5	51436	CONNECTOR, TUBE	EA	1



TS024850

Figure 13. Frame, crankshaft and oil seal.

(1) ILLUSTRATION		(2)	(3)	(4)	(5)	(6)	(7)	(8)
(a) FIG NO.	(b) ITEM NO.	SMR CODE	NATIONAL STOCK NUMBER	PART NUMBER	FSCM	DESCRIPTION Usable On Code	U/M	QTY INC IN UNIT
13	1	XBFZZ		3W75291T20	51436	CRANKSHAFT ASSEMBLY	EA	1
13	2	KBFZZ		23A9C17	51436	WOODRUFF, KEY	EA	1
13	3	XBFZZ		3W75291T200	51436	CRANKSHAFT ASSEMBLY	EA	1
13	4	XBFZZ		3W75326	51436	BUSHING, CRANK PIN	EA	1
13	5	XBFZZ		35A785	51436	PLUG, PIPE, HEX HEAD	EA	1
13	6	XBFZZ		11A7W4	51436	COUPLING, PIPE	EA	1
13	7	XBFZZ		18A7W22	51436	NIPPLE, PIPE	EA	2
13	8	XBFZZ		8A16X127	51436	PLATE, INSTRUCTION	EA	1
13	9	XBFZZ		3W75256T1	51436	BREATHER, TUBE	EA	1
13	10	XBFZZ		X1506IC5	51436	CONNECTOR, TUBE	EA	1
13	11	PAOZZ	5305-01-015-3279	35A2C56	51436	SCREW, CAP	EA	4
13	12	XBFZZ		X1016T33	51436	WASHER, LOCK	EA	4
13	13	XBFZZ		3W75293T10	51436	COVER, SHAFT END ASSEMBLY	EA	1
13	14	XBFZZ		3W6865P1	51436	COVER, SHAFT END	EA	1
13	15	KFFZZ		3W6868	51436	GASKET	EA	1
13	16	PAFZZ	5330-00-240-1508	3W99622T1	51436	PART OF SET P/N X1453T6 SEAL, SHAFT END	EA	1
13	17	XBFZZ		3F13643	51436	FRAME, COMPRESSOR	EA	1
13	18	XBFZZ		65A7M4	51436	ELBOW, PIPE	EA	2
13	19	XBFZZ		18A7W73	51436	NIPPLE, PIPE	EA	1
9	8	PBFZZ	5330-00-611-7184	X1453T6	30760	SET, GASKET	EA	1
9	14					O-RING	EA	1
9	17					GASKET	EA	1
11	4					O-RING	EA	1
11	9					GASKET	EA	1
11	18					GASKET	EA	1
12	4					GASKET	EA	2
12	8					GASKET	EA	1
12	15					GASKET	EA	1
13	15					GASKET	EA	1
11	24	PBFZZ	4310-00-411-3848	X1457T7A	30760	SET, PISTON RINGS	EA	1
11	25					RING	EA	2
11	26					RING	EA	1
12	21					RING	EA	2
12	22					RING	EA	1
12	23					RING	EA	1

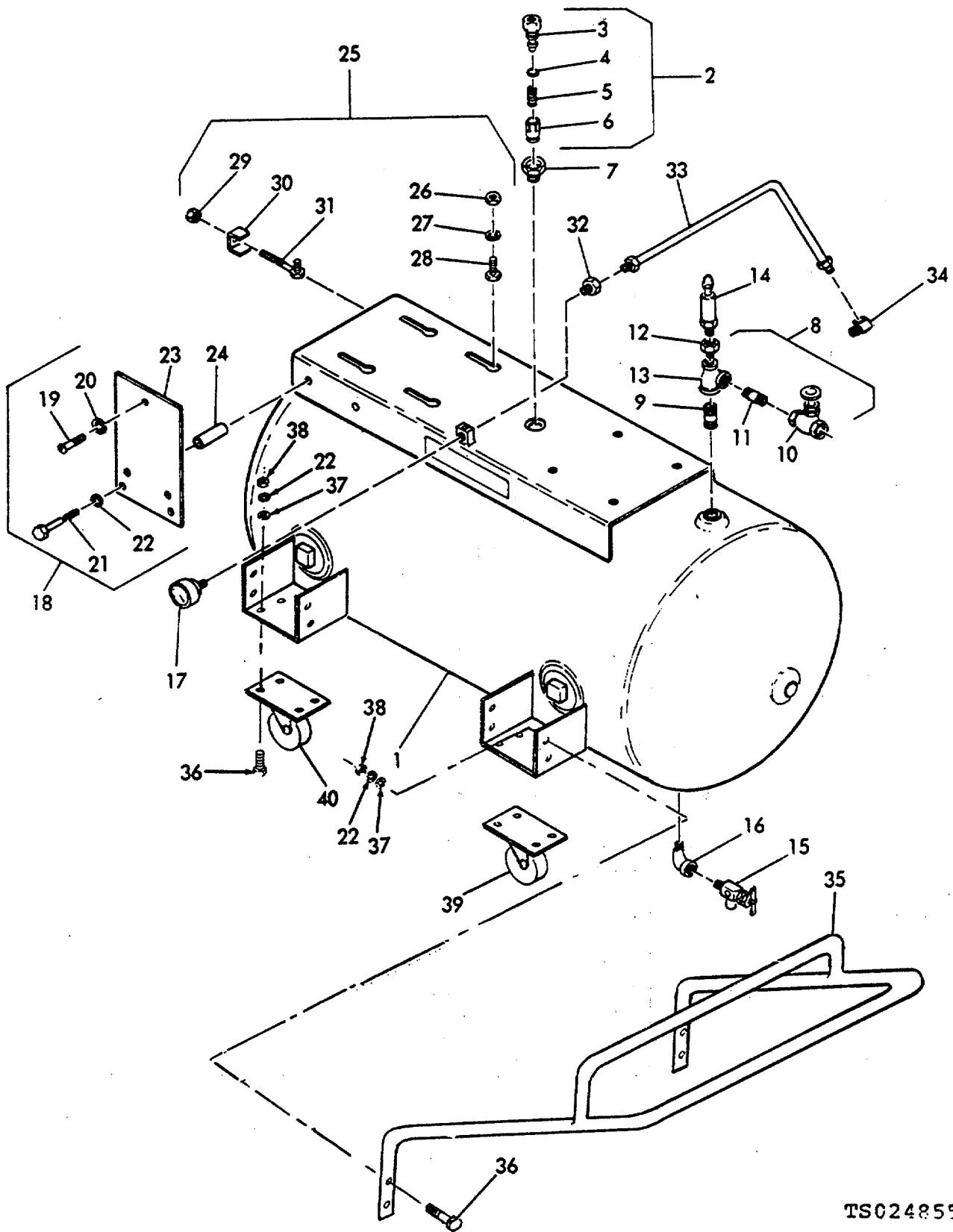
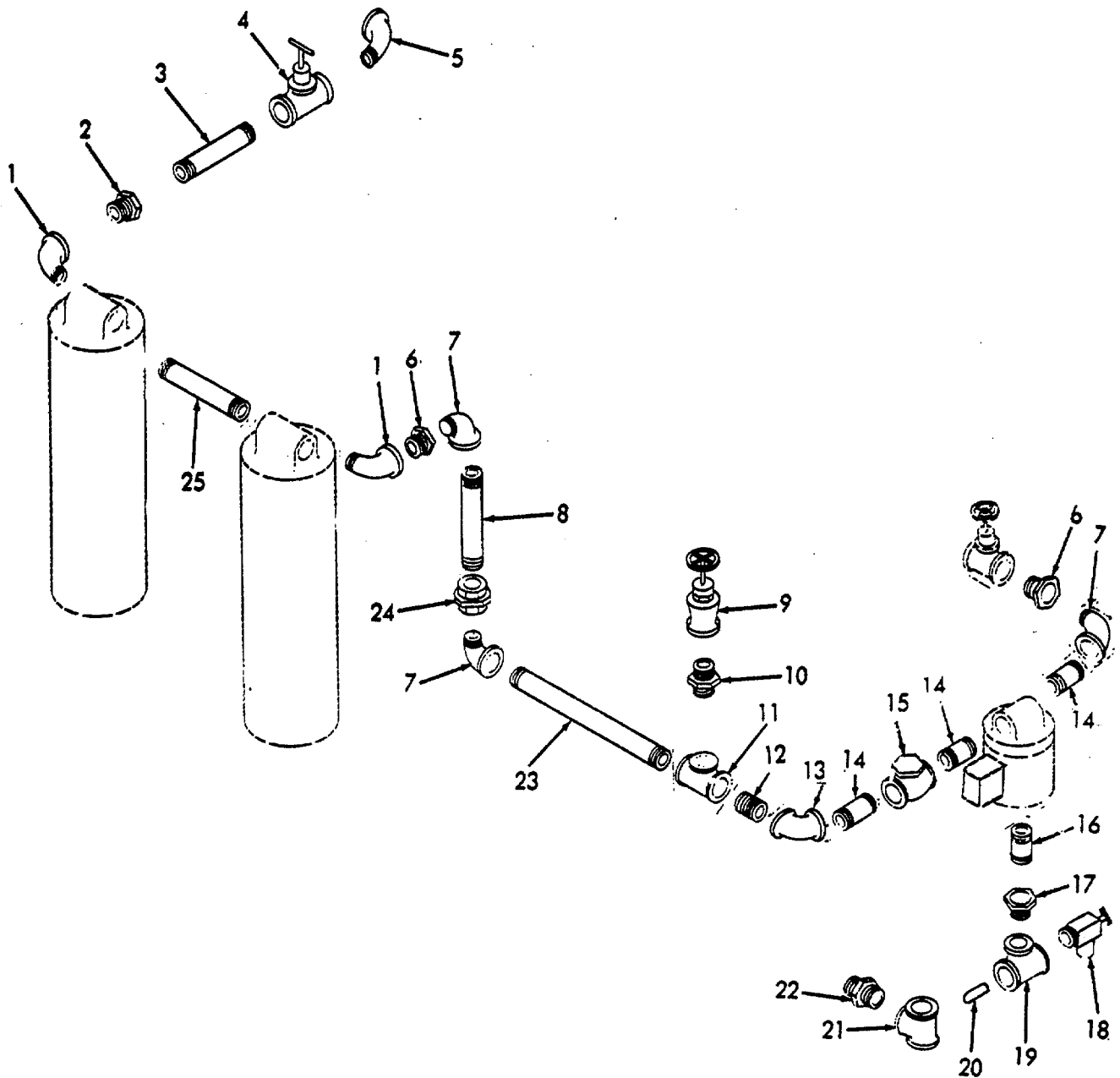


Figure 14. Receiver, check valve.

TS024855

(1) ILLUSTRATION		(2)	(3)	(4)	(5)	(6)	(7)	(8)
(a) FIG NO.	(b) ITEM NO.	SMR CODE	NATIONAL STOCK NUMBER	PART NUMBER	FSCM	DESCRIPTION Usable On Code	U/M	QTY INC IN UNIT
						GROUP: 05 AIR RECEIVER		
14	1	XBFZZ		3F28804	51436	AIR RECEIVER ASSEMBLY	EA	1
14	2	XBFZZ		3W75305T50	51436	CHECK VALVE ASSEMBLY	EA	1
14	3	XAFZZ		3W11254P3	51436	BODY, CHECK VALVE	EA	1
14	4	XAFZZ		3W11255	51436	CAP, CHECK VALVE	EA	1
14	5	XAFZZ		3W11256	51436	DISC, CHECK/VALVE	EA	1
14	6	XAFZZ		X1091PP458	51436	SPRING	EA	1
14	7	XDFZZ		23A7M11	51436	BUSHING, REDUCING	EA	1
14	8	XAOZZ		3W5407T3	51436	SERVICE LINE ASSEMBLY	EA	1
14	9	XAOZZ		18A7W5	51436	NIPPLE, PIPE	EA	1
14	10	XAOZZ		3W75410T2	51436	VALVE, GLOBE	EA	1
14	11	XBOZZ		18A7W4	51436	NIPPLE, CLOSE	EA	1
14	12	XBFZZ		23A7M5	51436	BUSHING, REDUCING	EA	1
14	13	XBOZZ		74A7M18	51436	TEE, REDUCING	EA	1
14	14	PAOZZ	4820-00-244-0365	X1396T28-210	51436	VALVE, SAFETY	EA	1
14	15	PAOZZ	4820-00-244-0413	3W99807	51436	VALVE, DRAIN	EA	1
14	16	XBOZZ		67A7M2	51436	ELBOW, STREET	EA	1
14	17	XBOZZ		3A12N37	51436	GAUGE, PRESSURE	EA	1
14	18	XBOZZ		3W84800T1	51436	MOUNTING, STARTER ASSEMBLY	EA	1
14	19	XBFZZ		83A2C144	51436	SCREW, ROUND HEAD	EA	3
14	20	PAOZZ	5310-00-098-1148	14A5C55	51436	WASHER, LOCK	EA	3
14	21	PAOZZ	5305-01-015-5383	35A2C120	51436	SCREW, CAP	EA	2
14	22	PAFZZ	5310-00-013-8002	14A5C76	51436	WASHER, LOCK	EA	26
14	23	XBOZZ		3W90511	51436	BRACKET, STARTER	EA	1
14	24	XBOZZ		3W75479T15	51436	SPACER, BRACKET	EA	2
14	25	PAOZZ		3W75539T9	51436	TIGHTENER, BELT ASSEMBLY	EA	1
14	26	PAOZZ	5310-00-880-7774	MS51967-5	96906	NUT	EA	4
14	27	PAOZZ	5310-00-407-9566	MS35338-45	96906	WASHER, LOCK	EA	4
14	28	PAOZZ	5305-01-015-5384	35A2C60	51436	SCREW, CAP	EA	3
14	29	PAOZZ	5310-01-015-0598	Y6A4C5	51436	NUT, TIGHTENER	EA	1
14	30	XBOZZ		3W11261	51436	CLIP, TIGHTENER	EA	1
14	31	XBOZZ		X1429TX520X6	51436	TIGHTENER, BELT	EA	1
14	32	XBFZZ		X1506IC5X4	51436	CONNECTOR, TUBE	EA	1
14	33	XBOZZ		3W75211T5	51436	TUBE, BLOCK GAUGE	EA	1
14	34	XBOZZ		X1506IE5	51436	ELBOW, TUBE	EA	1
14	35	XBFZZ		3H37842	51436	HANDLE AND HOLDING RACK	EA	1
14	36	PAFZZ	5306-01-015-5386	35A2C113	51436	BOLT, MACHINE	EA	24
14	37	PAFZZ	5310-01-015-0972	11A5C4	51436	WASHER, FLAT	EA	24
14	38	PAFZZ		21A4C13	51436	NUT	EA	24
14	39	XBFZZ		3W11438	51436	CASTER, SWIVEL	EA	2
14	40	XBOZZ		3W114359	51436	CASTER, RIGID	EA	2

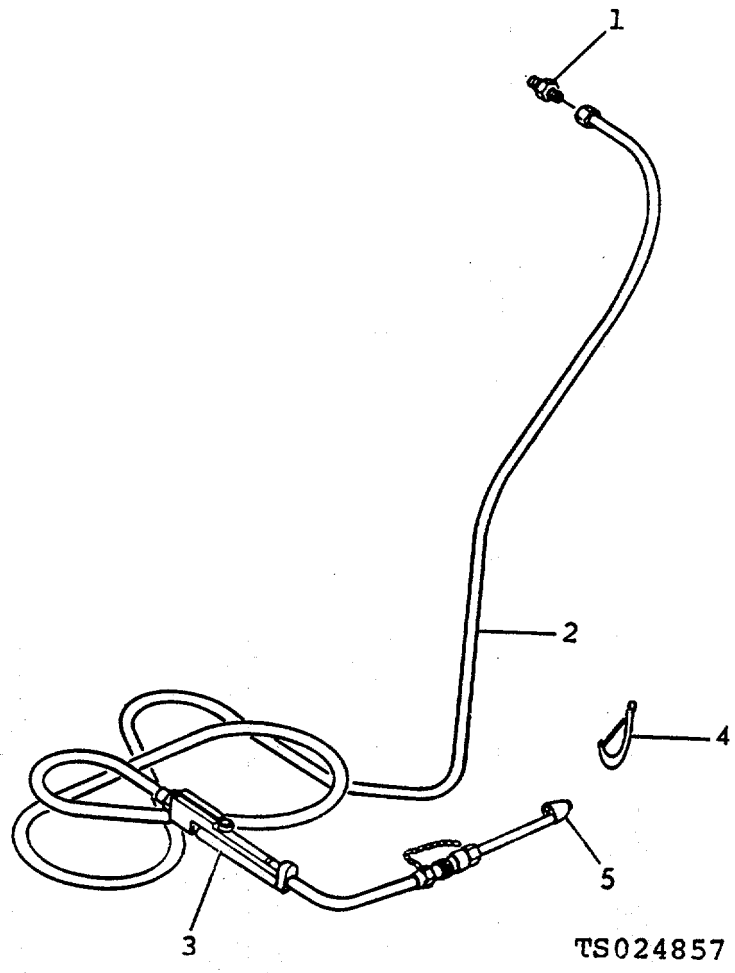


1'S024856

(1) ILLUSTRATION		(2)	(3)	(4)	(5)	(6)	(7)	(8)
(a) FIG NO.	(b) ITEM NO.	SMR CODE	NATIONAL STOCK NUMBER	PART NUMBER	FSCM	DESCRIPTION Usable On Code	U/M	QTY INC IN UNIT
15	1	XBFZZ		67A7M5	51436	ELBOW, STREET	EA	2
15	2	XBFZZ		23A7M9	51436	BUSHING	EA	1
15	3	XBFZZ		18A7S20	51436	NIPPLE	EA	1
15	4	PAFZZ		3W114445	51436	REGULATOR	EA	1
15	5	XBFZZ		67A7M2	51436	ELBOW, STREET	EA	1
15	6	XBFZZ		23A7M8	51436	BUSHING, REDUCING	EA	2
15	7	PAFZZ		67A7M3	51436	ELBOW, STREET	EA	2

Figure 15. Receiver pipes and fittings.

(1) ILLUSTRATION		(2)	(3)	(4)	(5)	(6)	(7)	(8)
(a) FIG NO.	(b) ITEM NO.	SMR CODE	NATIONAL STOCK NUMBER	PART NUMBER	FSCM	DESCRIPTION Usable On Code	U/M	QTY INC IN UNIT
15	8	XBFZZ	4820-00-244-0413	18A7S111	51436	NIPPLE, PIPE	EA	1
15	9	PAFZZ		3W75410T14	51436	VALVE, ANGLE GLOBE	EA	1
15	10	XBFZZ		23A7M2	51436	BUSHING, REDUCING	EA	1
15	11	XBFZZ		71A7M3	51436	TEE, PIPE	EA	1
15	12	XBFZZ		18A7S3	51436	NIPPLE, CLOSE	EA	1
15	13	XBFZZ		65A74M3	51436	ELBOW, PIPE	EA	1
15	14	XBFZZ		18A7S21	51436	NIPPLE, PIPE	EA	3
15	15	PAFZZ		3W114470	51436	VALVE, CHECK	EA	1
15	16	XBFZZ		18A7S1	51436	NIPPLE, CLOSE	EA	1
15	17	XBFZZ		23A7M1	51436	BUSHING, REDUCING	EA	1
15	18	PAOZZ		3W99807	51436	VALVE, DRAIN	EA	1
15	19	XBFZZ		71A7M2	51436	TEE	EA	1
15	20	PAOZZ		3W123426	51436	THERMOSTAT	EA	1
15	21	XBFZZ		71A7M4	51436	TEE	EA	1
15	22	XBFZZ		23A7M4	51436	BUSHING, REDUCING	EA	1
15	23	XBFZZ		18A7W197	51436	NIPPLE, PIPE	EA	1
15	24	XBFZZ		88A7M2	51436	UNION, PIPE	EA	2
15	25	XBFZZ		18A7W74	51436	NIPPLE, PIPE	EA	1



(1) ILLUSTRATION		(2)	(3)	(4)	(5)	(6)	(7)	(8)
(a) FIG NO.	(b) ITEM NO.	SMR CODE	NATIONAL STOCK NUMBER	PART NUMBER	FSCM	DESCRIPTION Usable On Code	U/M	QTY INC IN UNIT
16	1	XBOZZ		3W114007	51436	NIPPLE, HOSE ADAPTER	EA	1
16	2	PAOZZ	4720-00-253-0872	3W95993	88663	HOSE ASSEMBLY	EA	1
16	3	PAOZZ	4310-00-887-8765	3W114439	51436	DEVICE, INFLATION	EA	1
16	4	XBFZZ		3W114406	51436	HOLDER, GAUGE	EA	1
16	5	PAOZZ		3W114447	51436	GAUGE, TIRE	EA	1

Figure 16. Inflation device and hose.

**Section IV. INDEX-NATIONAL STOCK NUMBER AND REFERENCE NUMBER
CROSS-REFERENCE TO FIGURE AND ITEM NUMBER**

Stock Number	Figure No.	Item No.	Stock Number	Figure No.	Item No.
3030-00-278-1670	7	1	5310-00-004-3099	7	2
4310-00-253-0871	10	4	5310-00-013-8002	1	8
4310-00-255-0434	8	1		1	14
4310-00-255-0436	12	16		14	22
4310-00-411-3848			5310-00-045-3299	7	7
4310-00-887-8765	16	3	5310-00-080-6004	1	9
4720-00-253-0872	16	2	5310-00-098-1148	14	20
4820-00-244-0365	14	14	5310-00-407-9566	14	27
4820-00-244-0413	14	15	5310-00-543-2410	7	3
	15	8	5310-00-582-5965	11	11
5305-00-001-5115	1	13	5310-00-584-5272	8	3
	11	1	5310-00-761-6882	11	10
	12	1	5310-00-880-7774	14	26
5305-00-071-1774	7	4	5310-00-950-1310	1	4
5305-00-225-9081	9	10	5330-00-240-1508	13	16
5305-00-269-3210	11	14	5330-00-611-7184		
5305-00-269-3214	1	2	5910-00-256-0293	4	19
5306-00-225-8497	9	9	6105-00-274-4974	4	3

Part Number	FSCM	Fig No.	Item No.	Part Number	FSCM	Fig No.	Item No.
BK603Y	51436	3	2	X16061E5	51436	14	34
CW0805	51436	7	8	X15061E6	51436	7	11
D36903	51436	11	23	X15061F12	51436	7	16
D36946	51436	12	20	YGA4C5	51436	14	29
EK602Y	51436	3	4	109A290	51436	4	1
H36319	51436	7	10	11A5C4	61436	14	37
KTM122-1	12584	5	2	11A7W4	51436	13	6
KTM7	12584	5	6	12X4	51436	9	23
L49780	51436	8	1	12A6C4	51436	1	9
M527183-4	96906	1	4	14ASC55	51436	14	20
MS35338-40	96906	7	3	14A5C76	51436	1	8
MS35338-42	96906	7	7			1	14
MS35338-44	96906	11	11			14	22
MS35338-45	96906	14	27	1506I05	51436	11	28
MS35338-46	96906	1	3	18A7S1	51436	15	16
MS35338-48	96906	8	3	18A7S111	51436	15	8
MS39255-2A6A	96906	7	1	18A7S2D	51436	15	3
MS51967-14	96906	7	2	18A7S21	51436	15	14
MS51967-2	96906	11	10	18A7S3	51436	15	12
MS51967-5	96906	14	26	18A7W197	51436	1is	23
MS90725-11	96906	a	2	18A7W22	51436	13	7
MS90725-121	96906	7	4	18A7W4	51436	14	11
MS90725-32	96906	9	9	18A7W5	51436	10	6
MS90725-36	96906	9	10			14	9
MS90725-59	96906	11	14	18A7W73	51436	13	19
MS90725-64	96906	1	2	18A7W74	51436	15	25
RK602Y	51436	3	3	182TCDR7072	38151	4	3
R53561	51436	7	9	20A11CM006	51436	9	8
R57242	51436	3		20A11CM212	51436	9	17
R57243	51436	2		21A4C13	51436	14	38
R57243T1	51436	2	3	23A7M1	51436	15	17
R57243T2	51436	2	4	23A7M11	51436	14	7
R57243T3	51436	2	5	23A7M2	51436	15	10
R67243T4	51436	2	6	23A7M4	51436	15	22
R67243T5	51436	2	7	23A7M5	51436	14	12
T13T21-76	12584	5	1	23A7M8	51436	15	6
T130021-76	12584	5	4	23A7M9	51436	15	2
T147-8	12584	5	3	23A9C17	51436	13	2
X1016T33	61436	9	11	2452	12584	5	5
		13	12	3A12N37	51436	14	17
X1016T34	51436	11	15	3F13643	51436	13	17
		12	12	3F28804	51436	14	1
X1091PP311	51436	9	22	3H12422-2A543-112	51436	4	2
X1091PP458	51436	14	6	3H12718	51436	1	15
X1396128-210	51436	14	14	3H26670	51436	9	13
X1396T2860	51436	7	13	3H37842	51436	14	35
X1429TX520X6	51436	14	31	3R40620	51436	9	14
X1434T71	51436	7	12	3R4079	51436	12	14
X1440T288	51436	12	21	3R4080	51436	11	17
X1440T28H	51436	12	23	3R4081	51436	11	3
X1440T28K	51436	12	22	3R53528	51436	9	7
X1440T46B	51436	11	24	3R53608T10	51436	9	3
X1440T46H	51436	11	25	3R8172	51436	7	5
		11	26	3W11254P3	51436	14	3
X1453TS	30760	13	SET	3W11255	51436	14	4
X1467T7A	30760	12	SET	3W11256	51436	14	5
X1506IC5	51436	12	25	3W11261	51436	14	30
		13	10	311282	51436	7	15
X15061C5X4	51436	14	32	3W114007	51436	16	1
X1506IE5	51436	9	2	3W114089T10	51436	11	27

**Section IV. INDEX-NATIONAL STOCK NUMBER AND REFERENCE NUMBER
CROSS-REFERENCE TO FIGURE AND ITEM NUMBER**

<u>Part Number</u>	<u>FSCM</u>	<u>Fig No.</u>	<u>Item No.</u>	<u>Part Number</u>	<u>FSCM</u>	<u>Fig No.</u>	<u>Item No.</u>
3W114089T10	51436	12	24	3W75410T14	51436	15	9
3W11438	51436	14	39	3W75410T2	51436	14	10
3W1143569	51436	14	40	3W75424T3	51436	1	5
3W114405	51436	1	17	3W75478T7E	51436	1	1
3W114436	51436	1	16	3W75479T13	51436	1	11
3W114439	51436	16	3	3W75479T15	51436	14	24
3W 14445	51436	15	4	3W75479T4	51436	1	10
3W114446	51436	2	8	3W75539T9	51436	14	25
3W114447	51436	16	4	3W82	51436	9	16
31W114448	51436	6	2	3W84800T1	51436	14	18
3W114468	51436	2	2	3W90511	51436	14	23
3W114470	51436	15	15	3W95993	88663	16	2
3W11477	51436	12	4	3W99597T12	51436	1	6
3W11478	51436	12	8	3W99622T1	51436	13	16
3W11558	51436	10	2	3W99652T10	51436	9	5
3W11857	51436	11	22	3W99652T20	51436	9	4
3W11858	51436	12	19	3W99807	51436	14	15
3W11859	51436	11	21			15	18
		12	18	35A2C10	51436	2	1
3W123426	51436	15	20	35A2C110	51436	12	11
3W34426	51436	9	18	35A2C113	51436	14	36
3W39875	51436	1	12	36A2C115	30760	1	13
3W45928	51436	1	18			11	1
3W53608T10	51436	9	6			12	1
3W60504	51436	10	3	35A2C120	51436	14	21
3W60506	51436	10	4	35A2C130	51436	1	7
3W6865P1	51436	13	14	35A2C56	51436	13	11
3W6866	51436	11	8	36A2C60	51436	14	28
3W6868	51436	13	15	35A785	51436	13	5
3W6869	51436	11	9	4024252-1	38151	4	23
3W6870	51436	11	4	500W/115V	51436	3	1
3W6874	51436	11	13	5022519-2	38151	4	10
3W75211T5	51436	14	33	5900054-7	38151	4	12
3W75251	51436	10	5	6102259-6	38151	4	7
3W75256T1	51436	13	9	6102608-4	38151	4	13
3W75256T2	51436	9	1	6200019-5	38151	4	15
3W75288T20	51436	9	20	65A7M3	51436	15	13
3W75291T20	51436	13	1	65A7M4	51436	13	18
3W75291T200	51436	13	3	65A1M2	51436	7	14
3W75292T10	51436	9	12	65A7M2	51436	14	16
3W75293T10	51436	13	13			15	5
3W75294T10	51436	9	15	67A7M3	51436	15	7
3W75295T10	51436	11	20	6787M5	51436	15	1
		12	17	7A16X184	51436	9	19
3175295T10R	51436	11	19	71A7M2	51436	15	19
		12	16	7187M3	51436	15	11
3W75296T35	51436	12	13	71A7M4	51436	15	21
3W75296T50	51436	11	16	74A7M18	51436	14	13
3W75298T40	51436	10	1	8A16X127	51436	9	26
3W75299T20	51436	12	5	83A2C144	51436	15	24
3W75299T20S	51436	12	7	83A2C69	51436	11	12
3W75299T20X	51436	12	6	830C5900	01121	6	1
3W75299T30	51436	11	5	87A2X144P	51436	7	6
3W75299T30S	51436	11	7	88A7M2	51436	14	9
3W75299T30X	51436	11	6	91A2A146N	51436	13	8
3W75302T20	51436	12	2	911177-7	38151	4	9
3W75302T30	51436	11	2	9111771-3	38151	4	16
3W75305T50	51436	14	2	9115630-7	38151	4	19
3W75306	51436	9	21	9120796-7	38151	4	6
3W75307	51436	9	25	9137316-7	38151	4	21
3W75308	51436	9	24	91385088	38151	4	4
3W75310	51436	9	27	9168160-1	38151	4	22
3W75317	51436	12	9	9185462-0	38151	4	20
3W76318	51436	12	10	9185582-5	38151	4	17
3W75319	51436	12	3	9186271-4	38151	4	5
3W75326	51436	13	4	9222490-6	38151	4	8
3W75330	51436	11	18	9222510-1	38151	4	14
		12	15	9222640-6	38151	4	18
3W75407T3	51436	14	8	9241290-7	38151	4	11

By Order of the Secretary of the Army:

Official:

PAUL T. SMITH
Major General, United States Army
The Adjutant General

FRED C. WEYAND
General, United States Army
Chief of Staff

Distribution:

To be distributed in accordance with DA Form 12-25A, Organizational maintenance requirements for Air Compressors, 5 CFM.

☆U.S. GOVERNMENT PRINTING OFFICE: 1984 O - 421-302 (4740)

RECOMMENDED CHANGES TO EQUIPMENT TECHNICAL PUBLICATIONS



THEN...JOT DOWN THE
DOPE ABOUT IT ON THIS FORM.
CAREFULLY TEAR IT OUT, FOLD IT
AND DROP IT IN THE MAIL.

SOMETHING WRONG WITH PUBLICATION

FROM: (PRINT YOUR UNIT'S COMPLETE ADDRESS)

DATE SENT

PUBLICATION NUMBER

PUBLICATION DATE

PUBLICATION TITLE

BE EXACT PIN-POINT WHERE IT IS

PAGE
NO.

PARA-
GRAPH

FIGURE
NO.

TABLE
NO.

IN THIS SPACE, TELL WHAT IS WRONG
AND WHAT SHOULD BE DONE ABOUT IT.

TEAR ALONG PERFORATED LINE

PRINTED NAME, GRADE OR TITLE AND TELEPHONE NUMBER

SIGN HERE

THE METRIC SYSTEM AND EQUIVALENTS

Linear Measure

1 centimeter = 10 millimeters = .39 inch
 1 decimeter = 10 centimeters = 3.94 inches
 1 meter = 10 decimeters = 39.37 inches
 1 dekameter = 10 meters = 32.8 feet
 1 hectometer = 10 dekameters = 328.08 feet
 1 kilometer = 10 hectometers = 3,280.8 feet

Weights

1 centigram = 10 milligrams = .15 grain
 1 decigram = 10 centigrams = 1.54 grains
 1 gram = 10 decigrams = .035 ounce
 1 dekagram = 10 grams = .35 ounce
 1 hectogram = 10 dekagrams = 3.52 ounces
 1 kilogram = 10 hectograms = 2.2 pounds
 1 quintal = 100 kilograms = 220.46 pounds
 1 metric ton = 10 quintals = 1.1 short tons

Cubic Measure

1 cu. centimeter = 1000 cu. millimeters = .06 cu. inch
 1 cu. decimeter = 1000 cu. centimeters = 61.02 cu. in.
 1 cu. meter = 1000 cu. decimeters = 35.31 cu. feet

Square measure

1 sq. centimeter = 100 sq. millimeters = .155 sq. in.
 1 sq. decimeter = 100 sq. centimeters = 15.5 inches
 1 sq. meter (centare) = 100 sq. decimeters = 10.76 feet
 1 sq. dekameter (are) = 100 sq. meters = 1,076.4 sq. ft.
 1 sq. hectometer (hectare) = 100 sq. dekameters = 2.47 acres
 1 sq. kilometer = 100 hectometers = .386 sq. miles

Liquid Measure

1 dekaliter = 10 liters = 2.64 gallons
 1 hectoliter = 10 dekaliters = 26.42 gallons
 1 kiloliter = 10 hectoliters = 264.18 gallons
 1 liter = 10 deciliters = 33.81 fl. ounces
 1 centiliter = 10 milliliters = .34 fl. ounce
 1 deciliter = 10 centiliters = 3.38 fl. ounces
 1 metric ton = 10 quintals = 1.1 short tons

Approximate Conversion Factors

To change	To	Multiply by	To change	To	Multiply by
inches	centimeters	2.540	ounce inches	newton-meters	.0070062
feet	meters	.305	centimeters	inches	.394
yards	meters	.914	meters	feet	3.280
miles	kilometers	1.609	meters	yards	1.094
sq. inches	sq. centimeters	6.451	kilometers	miles	.621
sq. feet	sq. meters	.093	sq. centimeters	sq. inches	.155
sq. yards	sq. meters	.836	sq. meters	sq. yards	10.764
sq. miles	sq. kilometers	2.590	sq. kilometers	sq. miles	1.196
acres	sq. hectometers	.405	sq. hectometers	acres	2.471
cubic feet	cubic meters	.028	cubic meters	cubic feet	35.315
cubic yards	cubic meters	.765	milliliters	fluid ounces	.034
fluid ounces	milliliters	29.573	liters	pints	2.113
pints	liters	.472	liters	quarts	1.057
quarts	liters	.946	grams	ounces	.035
gallons	liters	3.785	kilograms	pounds	2.205
ounces	grams	28.349	metric tons	short tons	1.102
pounds	kilograms	.454	pound-feet	newton-meters	1.356
short tons	metric tons	.907			
pound inches	newton-meters	.11296			

Temperature (Exact)

°F Fahrenheit temperature

5/9 (after subtracting 32)

Celsius Temperature °C

PIN: 047966-002